

For Research Use Only

GS28 Polyclonal antibody

Catalog Number:16106-1-AP



Basic Information

Catalog Number: 16106-1-AP	GenBank Accession Number: BC012620	Purification Method: Antigen affinity purification
Size: 150ul , Concentration: 240 ug/ml by Bradford method using BSA as the standard;	GeneID (NCBI): 9527	Recommended Dilutions: WB 1:500-1:2000 IHC 1:50-1:500 IF/ICC 1:50-1:500
Source: Rabbit	UNIPROT ID: O95249	
Isotype: IgG	Full Name: golgi SNAP receptor complex member 1	
Immunogen Catalog Number: AG9021	Calculated MW: 28.6 kDa	
	Observed MW: 28 kDa	

Applications

Tested Applications:
WB, IHC, IF/ICC, ELISA

Species Specificity:
human, mouse, rat

Note-IHC: suggested antigen retrieval with TE buffer pH 9.0; (*) Alternatively, antigen retrieval may be performed with citrate buffer pH 6.0

Positive Controls:

WB : NIH/3T3 cells, HepG2 cells, human liver tissue, rat liver tissue

IHC : human stomach cancer tissue,

IF/ICC : HeLa cells,

Background Information

GS28, also known as GOSR1, is a 28-kDa Golgi SNARE protein that participates in ER-Golgi and intra-Golgi transport. GS28 is considered to be a core component of the Golgi SNARE complex. (PMID: 8638159)

Storage

Storage:
Store at -20°C. Stable for one year after shipment.
Storage Buffer:
PBS with 0.02% sodium azide and 50% glycerol pH 7.3.
Aliquoting is unnecessary for -20°C storage

*** 20ul sizes contain 0.1% BSA

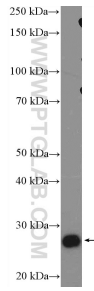
For technical support and original validation data for this product please contact:

T: 1 (888) 4PTGLAB (1-888-478-4522) (toll free in USA), or 1(312) 455-8498 (outside USA)

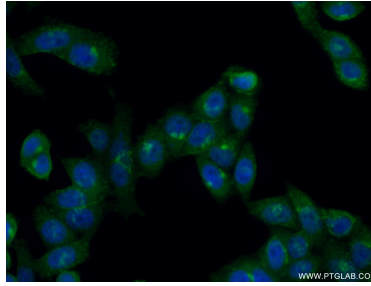
E: proteintech@ptglab.com
W: ptglab.com

This product is exclusively available under Proteintech Group brand and is not available to purchase from any other manufacturer.

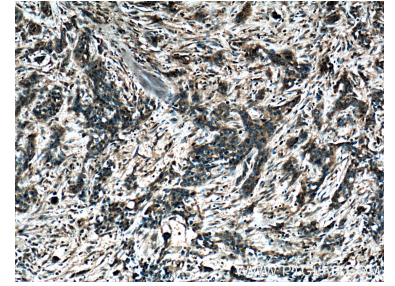
Selected Validation Data



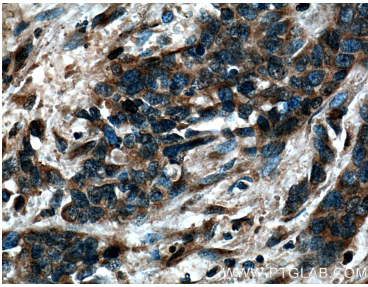
NIH/3T3 cells were subjected to SDS PAGE followed by western blot with 16106-1-AP (GS28 Antibody) at dilution of 1:1000 incubated at room temperature for 1.5 hours.



Immunofluorescent analysis of (10% Formaldehyde) fixed HeLa cells using 16106-1-AP (GS28 antibody) at dilution of 1:50 and Alexa Fluor 488-conjugated Goat Anti-Rabbit IgG(H+L).



Immunohistochemical analysis of paraffin-embedded human stomach cancer tissue slide using 16106-1-AP (GS28 Antibody) at dilution of 1:200 (under 10x lens).



Immunohistochemical analysis of paraffin-embedded human stomach cancer tissue slide using 16106-1-AP (GS28 Antibody) at dilution of 1:200 (under 40x lens).