

For Research Use Only

ERGIC1 Polyclonal antibody

Catalog Number: 16108-1-AP

Featured Product

4 Publications



Basic Information

Catalog Number:

16108-1-AP

Size:

150ul, Concentration: 300 ug/ml by Nanodrop and 200 ug/ml by Bradford method using BSA as the standard;

Source:

Rabbit

Isotype:

IgG

Immunogen Catalog Number:

AG9025

GenBank Accession Number:

BC012766

GeneID (NCBI):

57222

UNIPROT ID:

Q969X5

Full Name:

endoplasmic reticulum-golgi intermediate compartment (ERGIC) 1

Calculated MW:

290 aa, 33 kDa

Observed MW:

32 kDa

Purification Method:

Antigen affinity purification

Recommended Dilutions:

WB 1:500-1:3000

IP 0.5-4.0 ug for 1.0-3.0 mg of total protein lysate

IHC 1:50-1:500

IF/ICC 1:20-1:200

Applications

Tested Applications:

WB, IHC, IF/ICC, IP, ELISA

Cited Applications:

WB, IF

Species Specificity:

human, mouse, rat

Cited Species:

human

Note-IHC: suggested antigen retrieval with TE buffer pH 9.0; (*) Alternatively, antigen retrieval may be performed with citrate buffer pH 6.0

Positive Controls:

WB : HepG2 cells, mouse liver tissue, L02 cells

IP : HepG2 cells,

IHC : human liver cancer tissue,

IF/ICC : HepG2 cells,

Background Information

The function of ERGIC1 remains largely unknown. ERGIC1 was highly expressed in most primary prostate tumors. It is an intriguing potential drug target especially for the ERG oncogene expressing tumors (PMID: 22761906). The MW of this protein is 32 kDa, and this antibody specially recognises the 32 kDa protein.

Notable Publications

Author	Pubmed ID	Journal	Application
Shen Mynn Tan	25131211	Cell Rep	WB
Feiyu Tang	37979167	Cell Rep	WB,IF
Karsten Nalbach	36797266	Nat Commun	WB,IF

Storage

Storage:

Store at -20°C. Stable for one year after shipment.

Storage Buffer:

PBS with 0.02% sodium azide and 50% glycerol pH 7.3.

Aliquoting is unnecessary for -20°C storage

*** 20ul sizes contain 0.1% BSA

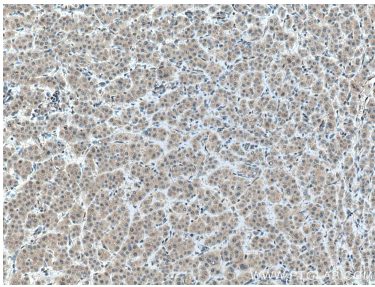
For technical support and original validation data for this product please contact:

T: 1 (888) 4PTGLAB (1-888-478-4522) (toll free in USA), or 1(312) 455-8498 (outside USA)

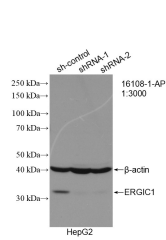
E: proteintech@ptglab.com
W: ptglab.com

This product is exclusively available under Proteintech Group brand and is not available to purchase from any other manufacturer.

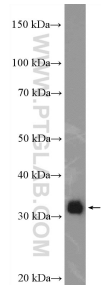
Selected Validation Data



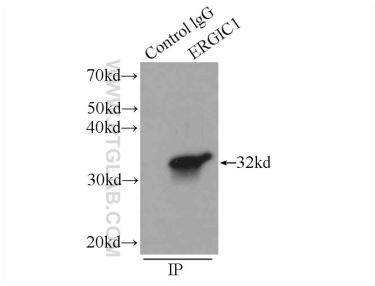
Immunohistochemical analysis of paraffin-embedded human liver cancer tissue slide using 16108-1-AP (ERGIC1 antibody) at dilution of 1:200 (under 10x lens. Heat mediated antigen retrieval with Tris-EDTA buffer (pH 9.0)).



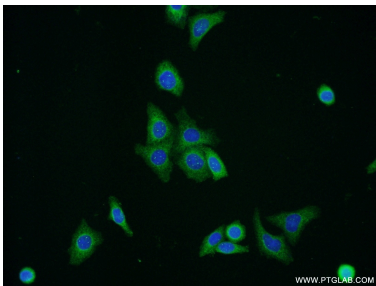
WB result of ERGIC1 antibody (16108-1-AP; 1:3000; incubated at room temperature for 1.5 hours) with sh-Control and sh-ERGIC1 transfected HepG2 cells.



HepG2 cells were subjected to SDS PAGE followed by western blot with 16108-1-AP (ERGIC1 Antibody) at dilution of 1:1500 incubated at room temperature for 1.5 hours.



IP result of anti-ERGIC1 (IP:16108-1-AP, 3ug; Detection:16108-1-AP 1:500) with HepG2 cells lysate 1720ug.



Immunofluorescent analysis of HepG2 cells using 16108-1-AP (ERGIC1 antibody) at dilution of 1:50 and Alexa Fluor 488-conjugated Goat Anti-Rabbit IgG(H+L).