

For Research Use Only

ARHGDIB Polyclonal antibody

Catalog Number: 16122-1-AP

Featured Product

6 Publications



Basic Information

Catalog Number:

16122-1-AP

Size:

150ul, Concentration: 1000 ug/ml by Nanodrop and 533 ug/ml by Bradford method using BSA as the standard;

Source:

Rabbit

Isotype:

IgG

Immunogen Catalog Number:

AG9078

GenBank Accession Number:

BC009200

GeneID (NCBI):

397

UNIPROT ID:

P52566

Full Name:

Rho GDP dissociation inhibitor (GDI)

beta

Calculated MW:

201 aa, 23 kDa

Observed MW:

27 kDa

Purification Method:

Antigen affinity purification

Recommended Dilutions:

WB 1:5000-1:50000

IP 0.5-4.0 ug for 1.0-3.0 mg of total protein lysate

IHC 1:20-1:200

Applications

Tested Applications:

WB, IP, IHC, ELISA

Cited Applications:

WB, IHC

Species Specificity:

human, mouse, rat

Cited Species:

human

Note-IHC: suggested antigen retrieval with TE buffer pH 9.0; (*) Alternatively, antigen retrieval may be performed with citrate buffer pH 6.0

Positive Controls:

WB : HL-60 cells, K-562 cells, rat spleen tissue, Jurkat cells, Raji cells

IP : Raji cells,

IHC : human stomach cancer tissue,

Background Information

ARHGDIB, also known as RhoGDI2, is a conserved member of the RhoGDI family and plays an important role in cell migrations. It regulates the GDP/GTP exchange reaction of the Rho proteins by inhibiting the dissociation of GDP from them, and the subsequent binding of GTP to them. It is mainly in hematopoietic, endothelial, and epithelial cells. It has been linked to tumorigenesis and metastasis. RhoGDI2 expression is downregulated in several cancer types, such as bladder, lung and lymphoma, but is upregulated in prostate and gastric cancer.

Notable Publications

Author	Pubmed ID	Journal	Application
Yang Fang	25180836	DNA Cell Biol	WB
Fan Zhang	25411139	Proteomics	WB
Lei Liu	34006303	Mol Cancer	WB

Storage

Storage:

Store at -20°C. Stable for one year after shipment.

Storage Buffer:

PBS with 0.02% sodium azide and 50% glycerol pH 7.3.

Aliquoting is unnecessary for -20°C storage

*** 20ul sizes contain 0.1% BSA

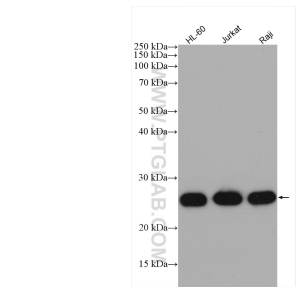
For technical support and original validation data for this product please contact:

T: 1 (888) 4PTGLAB (1-888-478-4522) (toll free in USA), or 1(312) 455-8498 (outside USA)

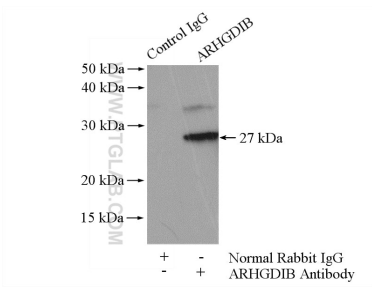
E: proteintech@ptglab.com
W: ptglab.com

This product is exclusively available under Proteintech Group brand and is not available to purchase from any other manufacturer.

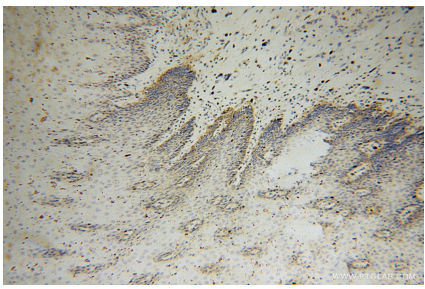
Selected Validation Data



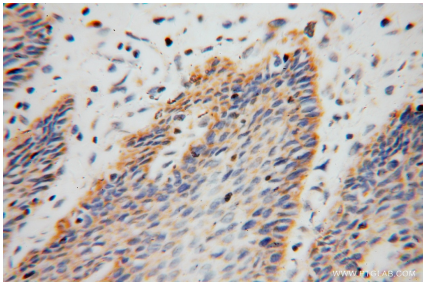
Various lysates were subjected to SDS PAGE followed by western blot with 16122-1-AP (ARHGDIB antibody) at dilution of 1:40000 incubated at room temperature for 1.5 hours.



IP result of anti-ARHGDIB (IP:16122-1-AP, 4ug; Detection:16122-1-AP 1:1000) with Raji cells lysate 2000ug.



Immunohistochemical analysis of paraffin-embedded human stomach cancer using 16122-1-AP (ARHGDIB antibody) at dilution of 1:100 (under 10x lens).



Immunohistochemical analysis of paraffin-embedded human stomach cancer using 16122-1-AP (ARHGDIB antibody) at dilution of 1:100 (under 40x lens).