

For Research Use Only

CLMP Polyclonal antibody

Catalog Number: 16127-1-AP

1 Publications



Basic Information

Catalog Number: 16127-1-AP	GenBank Accession Number: BC009371	Purification Method: Antigen affinity purification
Size: 150ul , Concentration: 450 ug/ml by Nanodrop;	GeneID (NCBI): 79827	Recommended Dilutions: WB 1:1000-1:4000 IHC 1:250-1:1000
Source: Rabbit	UNIPROT ID: Q9H6B4	
Isotype: IgG	Full Name: adipocyte-specific adhesion molecule	
Immunogen Catalog Number: AG9111	Calculated MW: 373 aa, 41 kDa	
	Observed MW: 45-50 kDa	

Applications

Tested Applications: WB, IHC, ELISA	Positive Controls:
Cited Applications: WB	WB : mouse brain tissue, 3T3-L1 cells, rat brain tissue
Species Specificity: human, mouse, rat	IHC : mouse brown adipose tissue,
Cited Species: human	

Note-IHC: suggested antigen retrieval with TE buffer pH 9.0; (*) Alternatively, antigen retrieval may be performed with citrate buffer pH 6.0

Background Information

CLMP (Coxsackie- and adenovirus receptor-like membrane protein), also known as ACAM (adipocyte adhesion molecule) or ASAM, is a member of the CTX (cortical thymocyte marker in Xenopus) family of proteins. CTX family proteins are type I transmembrane proteins within the Ig superfamily that localize to junctional complexes between endothelial and epithelial cells and may play a role in cell-cell adhesion. CLMP is predominantly expressed in epithelial cells within different tissues and in the white adipose tissue. It may be involved in the cell-cell adhesion and may play a role in adipocyte differentiation and development of obesity.

Notable Publications

Author	Pubmed ID	Journal	Application
Hiroki Takeuchi	34448537	Cell Microbiol	WB

Storage

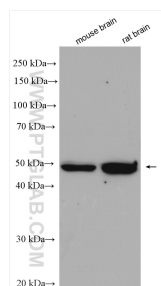
Storage:
Store at -20°C. Stable for one year after shipment.
Storage Buffer:
PBS with 0.02% sodium azide and 50% glycerol pH 7.3.
Aliquoting is unnecessary for -20°C storage

*** 20ul sizes contain 0.1% BSA

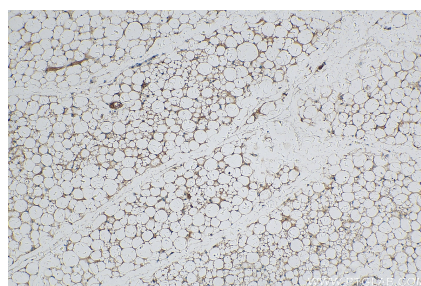
For technical support and original validation data for this product please contact:
T: 1 (888) 4PTGLAB (1-888-478-4522) (toll free in USA), or 1(312) 455-8498 (outside USA)
E: proteintech@ptglab.com
W: ptglab.com

This product is exclusively available under Proteintech Group brand and is not available to purchase from any other manufacturer.

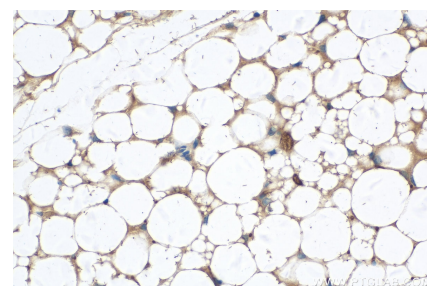
Selected Validation Data



Various lysates were subjected to SDS PAGE followed by western blot with 16127-1-AP (CLMP antibody) at dilution of 1:2000 incubated at room temperature for 1.5 hours.



Immunohistochemical analysis of paraffin-embedded mouse brown adipose tissue slide using 16127-1-AP (CLMP antibody) at dilution of 1:500 (under 10x lens). Heat mediated antigen retrieval with Tris-EDTA buffer (pH 9.0).



Immunohistochemical analysis of paraffin-embedded mouse brown adipose tissue slide using 16127-1-AP (CLMP antibody) at dilution of 1:500 (under 40x lens). Heat mediated antigen retrieval with Tris-EDTA buffer (pH 9.0).