

For Research Use Only

# MUL1 Polyclonal antibody

Catalog Number: 16133-1-AP

Featured Product

11 Publications



## Basic Information

### Catalog Number:

16133-1-AP

### Size:

150ul, Concentration: 400 ug/ml by Nanodrop and 300 ug/ml by Bradford method using BSA as the standard;

### Source:

Rabbit

### Isotype:

IgG

### Immunogen Catalog Number:

AG9119

### GenBank Accession Number:

BC010101

### GeneID (NCBI):

79594

### UNIPROT ID:

Q969V5

### Full Name:

mitochondrial E3 ubiquitin ligase 1

### Calculated MW:

352 aa, 40 kDa

### Observed MW:

35 kDa

### Purification Method:

Antigen affinity purification

### Recommended Dilutions:

WB 1:300-1:1000

IHC 1:20-1:200

## Applications

### Tested Applications:

WB, IHC, ELISA

### Cited Applications:

WB, IHC, IP, CoIP

### Species Specificity:

human, mouse, rat

### Cited Species:

human, mouse, rat

### Positive Controls:

WB : HeLa cells,

IHC : human kidney tissue,

**Note-IHC: suggested antigen retrieval with TE buffer pH 9.0; (\*) Alternatively, antigen retrieval may be performed with citrate buffer pH 6.0**

## Background Information

Mitochondrial ubiquitin ligase 1 (MUL1), MAPL, MULAN, or gGIDE, was identified as an E3 protein ligase by three independent groups. Work in mammalian systems shows that MUL1 has small ubiquitin-like modifier (SUMO) ligase activity, stabilizing Drp1, or ubiquitin ligase activity, degrading Mfn. MUL1 expression in mammalian cells results in smaller and more fragmented mitochondria.

## Notable Publications

Author	Pubmed ID	Journal	Application
Shu Guo	30716316	Eur J Pharmacol	WB
Shi-Jing Wang	31825666	Can J Physiol Pharmacol	CoIP
Yu Liu	36531208	Oxid Med Cell Longev	WB

## Storage

### Storage:

Store at -20°C. Stable for one year after shipment.

### Storage Buffer:

PBS with 0.02% sodium azide and 50% glycerol pH 7.3.

Aliquoting is unnecessary for -20°C storage

\*\*\* 20ul sizes contain 0.1% BSA

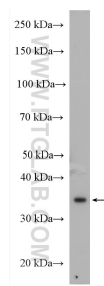
For technical support and original validation data for this product please contact:

T: 1 (888) 4PTGLAB (1-888-478-4522) (toll free in USA), or 1(312) 455-8498 (outside USA)

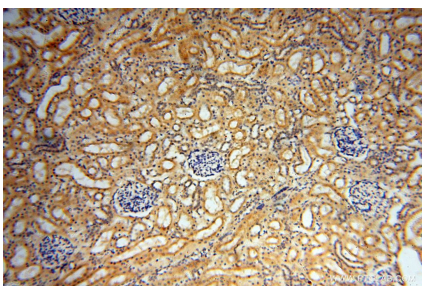
E: [proteintech@ptglab.com](mailto:proteintech@ptglab.com)  
W: [ptglab.com](http://ptglab.com)

This product is exclusively available under Proteintech Group brand and is not available to purchase from any other manufacturer.

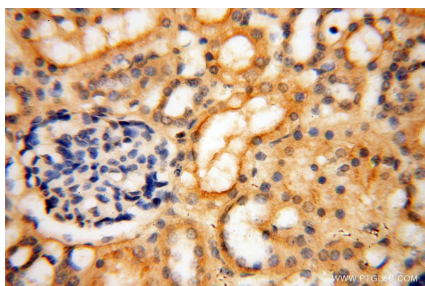
Selected Validation Data



HeLa cells were subjected to SDS PAGE followed by western blot with 16133-1-AP (MUL1 antibody) at dilution of 1:600 incubated at room temperature for 1.5 hours.



Immunohistochemical analysis of paraffin-embedded human kidney using 16133-1-AP (MUL1 antibody) at dilution of 1:50 (under 10x lens).



Immunohistochemical analysis of paraffin-embedded human kidney using 16133-1-AP (MUL1 antibody) at dilution of 1:50 (under 40x lens).