

For Research Use Only

# LAD1 Polyclonal antibody

Catalog Number: 16136-1-AP

1 Publications



## Basic Information

### Catalog Number:

16136-1-AP

### Size:

150ul, Concentration: 500 ug/ml by Nanodrop and 307 ug/ml by Bradford method using BSA as the standard;

### Source:

Rabbit

### Isotype:

IgG

### Immunogen Catalog Number:

AG9159

### GenBank Accession Number:

BC009742

### GeneID (NCBI):

3898

### UNIPROT ID:

O00515

### Full Name:

ladinin 1

### Calculated MW:

517 aa, 57 kDa

### Observed MW:

57 kDa

### Purification Method:

Antigen affinity purification

### Recommended Dilutions:

WB 1:2000-1:16000

IHC 1:500-1:2000

## Applications

### Tested Applications:

WB, IHC, ELISA

### Cited Applications:

WB, IF, IHC

### Species Specificity:

human, mouse

### Cited Species:

human

### Positive Controls:

WB : MCF-7 cells,

IHC : human colon cancer tissue,

**Note-IHC: suggested antigen retrieval with TE buffer pH 9.0; (\*) Alternatively, antigen retrieval may be performed with citrate buffer pH 6.0**

## Background Information

Ladinin-1, also named as LADA, or LAD1, is an anchoring filament protein which is a component of the basement membrane zone. It is a novel component of the basement membranes and may function in contributing to the stability of the association of the epithelial layers with the underlying mesenchyme. Human ladinin is an autoantigen associated with linear IgA disease. It is a secreted protein. Immunohistochemical staining of 16136-1-AP shows strong extracellular matrix positivity in human testis. The predicted MW of this protein is 57 kDa.

## Notable Publications

Author	Pubmed ID	Journal	Application
Yingming Jiang	37718450	J Transl Med	WB,IHC,IF

## Storage

### Storage:

Store at -20°C. Stable for one year after shipment.

### Storage Buffer:

PBS with 0.02% sodium azide and 50% glycerol pH 7.3.

Aliquoting is unnecessary for -20°C storage

\*\*\* 20ul sizes contain 0.1% BSA

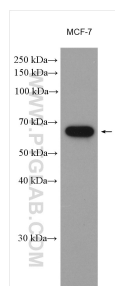
For technical support and original validation data for this product please contact:

T: 1 (888) 4PTGLAB (1-888-478-4522) (toll free in USA), or 1(312) 455-8498 (outside USA)

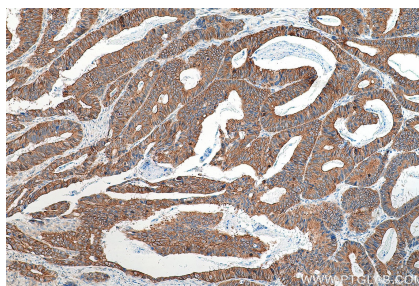
E: [proteintech@ptglab.com](mailto:proteintech@ptglab.com)  
W: [ptglab.com](http://ptglab.com)

This product is exclusively available under Proteintech Group brand and is not available to purchase from any other manufacturer.

## Selected Validation Data



MCF-7 cells were subjected to SDS PAGE followed by western blot with 16136-1-AP (LAD1 antibody) at dilution of 1:8000 incubated at room temperature for 1.5 hours.



Immunohistochemical analysis of paraffin-embedded human colon cancer tissue slide using 16136-1-AP (LAD1 antibody) at dilution of 1:1000 (under 10x lens). Heat mediated antigen retrieval with Tris-EDTA buffer (pH 9.0).