

For Research Use Only

CAB39L Polyclonal antibody

Catalog Number: 16137-1-AP

1 Publications



Basic Information

Catalog Number:

16137-1-AP

Size:

150ul, Concentration: 550 ug/ml by Nanodrop and 367 ug/ml by Bradford method using BSA as the standard;

Source:

Rabbit

Isotype:

IgG

Immunogen Catalog Number:

AG9181

GenBank Accession Number:

BC010993

GeneID (NCBI):

81617

UNIPROT ID:

Q9H9S4

Full Name:

calcium binding protein 39-like

Calculated MW:

337 aa, 39 kDa

Observed MW:

39 kDa

Purification Method:

Antigen affinity purification

Recommended Dilutions:

WB 1:500-1:2000

IHC 1:50-1:500

IF/ICC 1:50-1:500

Applications

Tested Applications:

WB, IHC, IF/ICC, ELISA

Cited Applications:

IHC

Species Specificity:

human

Cited Species:

human

Note-IHC: suggested antigen retrieval with TE buffer pH 9.0; (*) Alternatively, antigen retrieval may be performed with citrate buffer pH 6.0

Positive Controls:

WB : K-562 cells, HEK-293 cells, human spleen tissue

IHC : human lymphoma tissue,

IF/ICC : HEK-293 cells,

Notable Publications

| Author | Pubmed ID | Journal | Application |
|-----------|-----------|-------------------|-------------|
| Yunfei Wu | 37109674 | Medicina (Kaunas) | IHC |

Storage

Storage:

Store at -20°C. Stable for one year after shipment.

Storage Buffer:

PBS with 0.02% sodium azide and 50% glycerol pH 7.3.

Aliquoting is unnecessary for -20°C storage

*** 20ul sizes contain 0.1% BSA

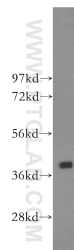
For technical support and original validation data for this product please contact:

T: 1 (888) 4PTGLAB (1-888-478-4522) (toll free in USA), or 1(312) 455-8498 (outside USA)

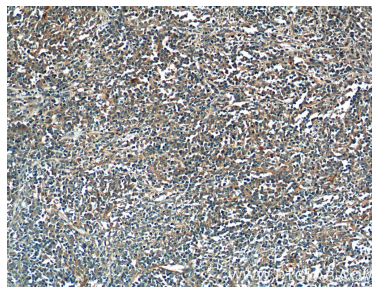
E: proteintech@ptglab.com
W: ptglab.com

This product is exclusively available under Proteintech Group brand and is not available to purchase from any other manufacturer.

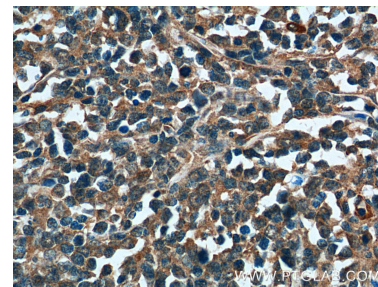
Selected Validation Data



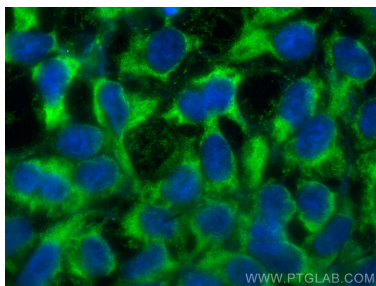
K-562 cells were subjected to SDS PAGE followed by western blot with 16137-1-AP (CAB39L antibody) at dilution of 1:400 incubated at room temperature for 1.5 hours.



Immunohistochemical analysis of paraffin-embedded human lymphoma tissue slide using 16137-1-AP (CAB39L Antibody) at dilution of 1:200 (under 10x lens).



Immunohistochemical analysis of paraffin-embedded human lymphoma tissue slide using 16137-1-AP (CAB39L Antibody) at dilution of 1:200 (under 40x lens).



Immunofluorescent analysis of (-20°C Ethanol) fixed HEK-293 cells using CAB39L antibody (16137-1-AP) at dilution of 1:200 and CoraLite®488-Conjugated AffiniPure Goat Anti-Rabbit IgG(H+L) (SA00013-2).