

For Research Use Only

# CAB39L Polyclonal antibody, PBS Only

Catalog Number:16137-1-PBS



## Basic Information

Catalog Number:

16137-1-PBS

Size:

100ug , Concentration: 1 mg/ml by Nanodrop;

Source:

Rabbit

Isotype:

IgG

Immunogen Catalog Number:

AG9181

GenBank Accession Number:

BC010993

GeneID (NCBI):

81617

UNIPROT ID:

Q9H9S4

Full Name:

calcium binding protein 39-like

Calculated MW:

337 aa, 39 kDa

Observed MW:

39 kDa

Purification Method:

Antigen affinity purification

## Applications

Tested Applications:

WB, IHC, IF/ICC, Indirect ELISA

Species Specificity:

human

## Storage

Storage:

Store at -80°C.

Storage Buffer:

PBS Only

For technical support and original validation data for this product please contact:

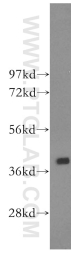
T: 1 (888) 4PTGLAB (1-888-478-4522) (toll free in USA), or 1(312) 455-8498 (outside USA)

E: [proteintech@ptglab.com](mailto:proteintech@ptglab.com)

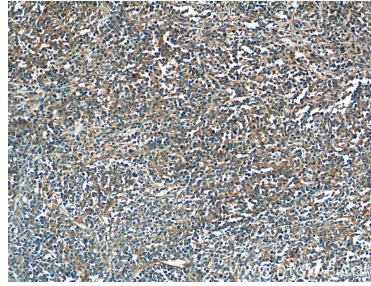
W: [ptglab.com](http://ptglab.com)

This product is exclusively available under Proteintech Group brand and is not available to purchase from any other manufacturer.

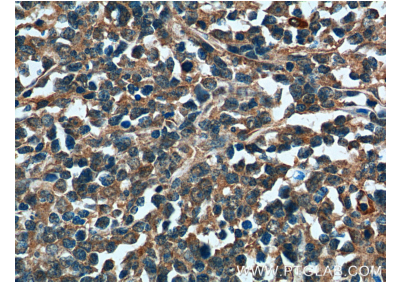
## Selected Validation Data



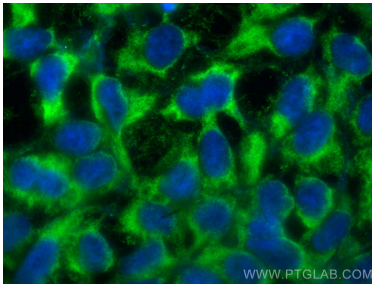
K-562 cells were subjected to SDS PAGE followed by western blot with 16137-1-AP (CAB39L antibody) at dilution of 1:400 incubated at room temperature for 1.5 hours. This data was developed using the same antibody clone with 16137-1-PBS in a different storage buffer formulation.



Immunohistochemical analysis of paraffin-embedded human lymphoma tissue slide using 16137-1-AP (CAB39L Antibody) at dilution of 1:200 (under 10x lens). This data was developed using the same antibody clone with 16137-1-PBS in a different storage buffer formulation.



Immunohistochemical analysis of paraffin-embedded human lymphoma tissue slide using 16137-1-AP (CAB39L Antibody) at dilution of 1:200 (under 40x lens). This data was developed using the same antibody clone with 16137-1-PBS in a different storage buffer formulation.



Immunofluorescent analysis of (-20°C Ethanol) fixed HEK-293 cells using CAB39L antibody (16137-1-AP) at dilution of 1:200 and CoraLite@488-Conjugated AffiniPure Goat Anti-Rabbit IgG(H+L) (SA00013-2). This data was developed using the same antibody clone with 16137-1-PBS in a different storage buffer formulation.