

For Research Use Only

POLR1E Polyclonal antibody

Catalog Number: 16145-1-AP

Featured Product

7 Publications



Basic Information

Catalog Number: 16145-1-AP	GenBank Accession Number: BC014331	Purification Method: Antigen affinity purification
Size: 150ul, Concentration: 600 µg/ml by Nanodrop and 333 µg/ml by Bradford method using BSA as the standard;	GeneID (NCBI): 64425	Recommended Dilutions: WB 1:2000-1:12000 IP 0.5-4.0 ug for IP and 1:500-1:1000 for WB
Source: Rabbit	Full Name: polymerase (RNA) I polypeptide E, 53kDa	IHC 1:20-1:200
Isotype: IgG	Calculated MW: 481aa,54 kDa; 419aa,47 kDa	
Immunogen Catalog Number: AG9269	Observed MW: 47-53 kDa	

Applications

Tested Applications: IHC, IP, WB, ELISA	Positive Controls:
Cited Applications: ChIP, IF, WB	WB: HeLa cells, human brain tissue, Jurkat cells, MCF-7 cells
Species Specificity: human, mouse, rat	IP: Jurkat cells,
Cited Species: human	IHC: human liver cancer tissue,

Note-IHC: suggested antigen retrieval with TE buffer pH 9.0; (*) Alternatively, antigen retrieval may be performed with citrate buffer pH 6.0

Background Information

Notable Publications

Author	Pubmed ID	Journal	Application
Rachel McNamar	31727736	J Biol Chem	WB
Stephanie Pitts	36372232	J Biol Chem	WB
Man Wu	34326237	Science	ChIP

Storage

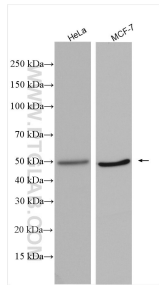
Storage:
Store at -20°C. Stable for one year after shipment.
Storage Buffer:
PBS with 0.02% sodium azide and 50% glycerol pH 7.3.
Aliquoting is unnecessary for -20°C storage

*** 20ul sizes contain 0.1% BSA

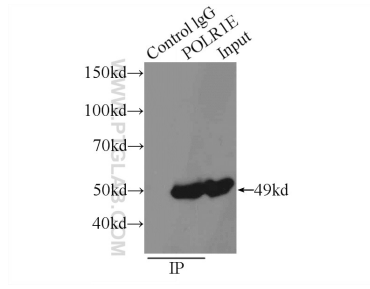
For technical support and original validation data for this product please contact:
T: 1 (888) 4PTGLAB (1-888-478-4522) (toll free in USA), or 1(312) 455-8498 (outside USA)
E: proteintech@ptglab.com
W: ptglab.com

This product is exclusively available under Proteintech Group brand and is not available to purchase from any other manufacturer.

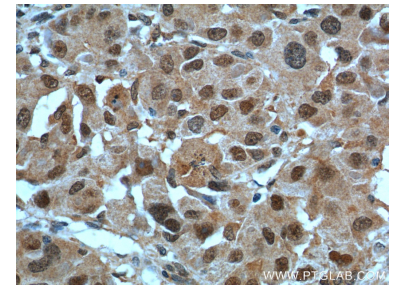
Selected Validation Data



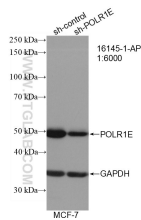
Various lysates were subjected to SDS PAGE followed by western blot with 16145-1-AP (POLR1E antibody) at dilution of 1:6000 incubated at room temperature for 1.5 hours.



IP Result of anti-POLR1E (IP:16145-1-AP, 3ug; Detection:16145-1-AP 1:500) with Jurkat cells lysate 1000ug.



Immunohistochemical analysis of paraffin-embedded human liver cancer tissue slide using 16145-1-AP (POLR1E Antibody) at dilution of 1:200 (under 40x lens). Heat mediated antigen retrieval with Tris-EDTA buffer (pH 9.0).



WB result of POLR1E antibody (16145-1-AP; 1:6000; incubated at room temperature for 1.5 hours) with sh-Control and sh-POLR1E transfected MCF-7 cells.