

For Research Use Only

# LYPLAL1 Polyclonal antibody

Catalog Number: 16146-1-AP

Featured Product

3 Publications



## Basic Information

<b>Catalog Number:</b> 16146-1-AP	<b>GenBank Accession Number:</b> BC016711	<b>Purification Method:</b> Antigen affinity purification
<b>Size:</b> 150ul , Concentration: 350 µg/ml by Nanodrop and 233 µg/ml by Bradford method using BSA as the standard;	<b>GeneID (NCBI):</b> 127018	<b>Recommended Dilutions:</b> WB 1:500-1:3000 IHC 1:50-1:500
<b>Source:</b> Rabbit	<b>Full Name:</b> lysophospholipase-like 1	
<b>Isotype:</b> IgG	<b>Calculated MW:</b> 237 aa, 26 kDa	
<b>Immunogen Catalog Number:</b> AG9271	<b>Observed MW:</b> 26-30 kDa	

## Applications

<b>Tested Applications:</b> IHC, WB, ELISA	<b>Positive Controls:</b> WB : HEK-293T cells, HeLa cells
<b>Cited Applications:</b> IHC, WB	<b>IHC :</b> human liver cancer tissue, mouse kidney tissue, human kidney tissue
<b>Species Specificity:</b> human, mouse, rat	
<b>Cited Species:</b> human, mouse	
<b>Note-IHC: suggested antigen retrieval with TE buffer pH 9.0; (*) Alternatively, antigen retrieval may be performed with citrate buffer pH 6.0</b>	

## Background Information

Lysophospholipase-like 1 protein, encoded by LYPLAL1, a 26 kDa cytosol protein which belongs to a subclass of lysophospholipase family. Human genome-wide association studies link variants of the gene encoding this enzyme to fat distribution, waist-to-hip ratio and non-alcoholic fatty liver disease. LYPLAL1 reported to be up-regulated in subcutaneous adipose tissue of obese individuals. (PMID: 25958046, PMID: 27391855, PMID: 21674055)

## Notable Publications

Author	Pubmed ID	Journal	Application
Bernard P Kok	32514184	Nat Chem Biol	WB
Rachel A Watson	29084768	Dis Model Mech	WB
Yizeng Fan	37802025	Mol Cell	WB, IHC

## Storage

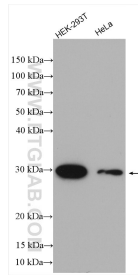
**Storage:**  
Store at -20°C. Stable for one year after shipment.  
**Storage Buffer:**  
PBS with 0.02% sodium azide and 50% glycerol pH 7.3.  
Aliquoting is unnecessary for -20°C storage

\*\*\* 20ul sizes contain 0.1% BSA

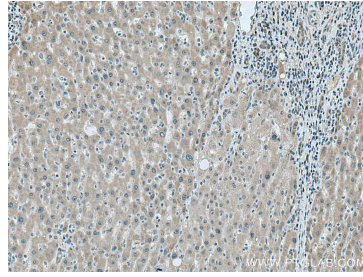
For technical support and original validation data for this product please contact:  
T: 1 (888) 4PTGLAB (1-888-478-4522) (toll free in USA), or 1(312) 455-8498 (outside USA)  
E: proteintech@ptglab.com  
W: ptglab.com

This product is exclusively available under Proteintech Group brand and is not available to purchase from any other manufacturer.

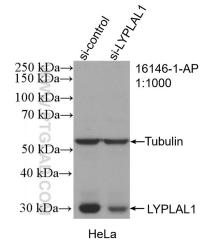
## Selected Validation Data



Various lysates were subjected to SDS PAGE followed by western blot with 16146-1-AP (LYPLAL1 antibody) at dilution of 1:1500 incubated at room temperature for 1.5 hours.



Immunohistochemical analysis of paraffin-embedded human liver cancer tissue slide using 16146-1-AP (LYPLAL1 antibody) at dilution of 1:200 (under 10x lens). Heat mediated antigen retrieval with Tris-EDTA buffer (pH 9.0).



WB result of LYPLAL1 antibody (16146-1-AP; 1:1000; incubated at room temperature for 1.5 hours) with sh-Control and sh-LYPLAL1 transfected HeLa cells.