

For Research Use Only

SMYD1-Specific Polyclonal antibody



Catalog Number: 16151-1-AP

1 Publications

Basic Information

Catalog Number: 16151-1-AP	GenBank Accession Number: NM_198274	Purification Method: Antigen affinity purification
Size: 150ul , Concentration: 450 µg/ml by Nanodrop and 360 µg/ml by Bradford method using BSA as the standard;	GeneID (NCBI): 150572	Recommended Dilutions: WB 1:500-1:1000 IP 0.5-4.0 ug for IP and 1:500-1:1000 for WB
Source: Rabbit	Full Name: SET and MYND domain containing 1	Calculated MW: 57 kDa
Isotype: IgG	Observed MW: 57 kDa	IHC 1:20-1:200

Applications

Tested Applications: IHC, IP, WB, ELISA	Positive Controls: WB : mouse heart tissue, mouse skeletal muscle tissue
Cited Applications: IF, WB	IP : mouse heart tissue,
Species Specificity: human, mouse	IHC : human testis tissue, human heart tissue, human kidney tissue, human placenta tissue, human skin tissue, human liver tissue, human spleen tissue, human lung tissue, human ovary tissue, mouse heart tissue
Cited Species: mouse	
Note-IHC: suggested antigen retrieval with TE buffer pH 9.0; (*) Alternatively, antigen retrieval may be performed with citrate buffer pH 6.0	

Background Information

Notable Publications

Author	Pubmed ID	Journal	Application
Fang Li	37385529	Toxicol Lett	WB,IF

Storage

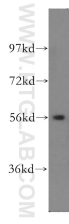
Storage:
Store at -20°C. Stable for one year after shipment.
Storage Buffer:
PBS with 0.02% sodium azide and 50% glycerol pH 7.3.
Aliquoting is unnecessary for -20°C storage

*** 20ul sizes contain 0.1% BSA

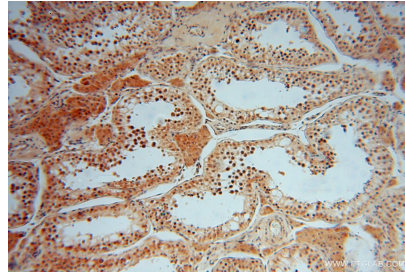
For technical support and original validation data for this product please contact:
T: 1 (888) 4PTGLAB (1-888-478-4522) (toll free in USA), or 1(312) 455-8498 (outside USA)
E: proteintech@ptglab.com
W: ptglab.com

This product is exclusively available under Proteintech Group brand and is not available to purchase from any other manufacturer.

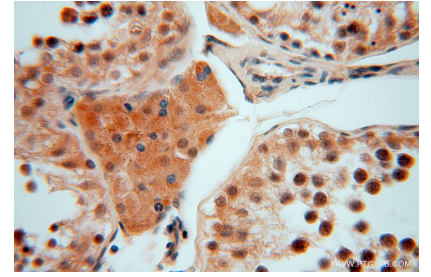
Selected Validation Data



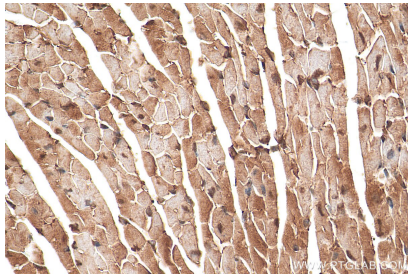
mouse heart tissue were subjected to SDS PAGE followed by western blot with 16151-1-AP (SMYD1-Specific antibody) at dilution of 1:500 incubated at room temperature for 1.5 hours.



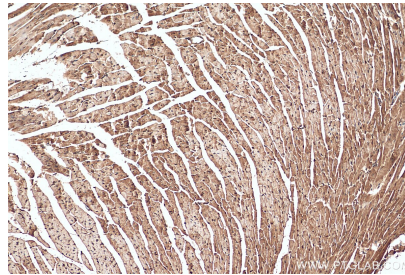
Immunohistochemical analysis of paraffin-embedded human testis using 16151-1-AP (SMYD1-Specific antibody) at dilution of 1:50 (under 10x lens).



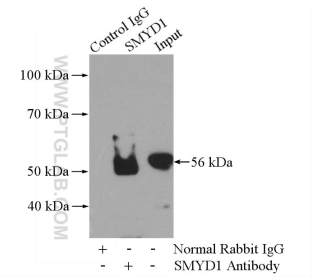
Immunohistochemical analysis of paraffin-embedded human testis using 16151-1-AP (SMYD1-Specific antibody) at dilution of 1:50 (under 40x lens).



Immunohistochemical analysis of paraffin-embedded mouse heart tissue slide using 16151-1-AP (SMYD1-Specific antibody) at dilution of 1:200 (under 10x lens). Heat mediated antigen retrieval with Tris-EDTA buffer (pH 9.0).



Immunohistochemical analysis of paraffin-embedded mouse heart tissue slide using 16151-1-AP (SMYD1-Specific antibody) at dilution of 1:200 (under 40x lens). Heat mediated antigen retrieval with Tris-EDTA buffer (pH 9.0).



IP Result of anti-SMYD1-Specific (IP:16151-1-AP, 4ug; Detection:16151-1-AP 1:500) with mouse heart tissue lysate 4000ug.