

For Research Use Only

# KRAS-4A-specific Polyclonal antibody

Catalog Number: 16156-1-AP

3 Publications



## Basic Information

### Catalog Number:

16156-1-AP

### Size:

150ul, Concentration: 1400 ug/ml by Nanodrop and 693 ug/ml by Bradford method using BSA as the standard;

### Source:

Rabbit

### Isotype:

IgG

### GenBank Accession Number:

NM\_033360

### GeneID (NCBI):

3845

### UNIPROT ID:

P01116

### Full Name:

v-Ki-ras2 Kirsten rat sarcoma viral oncogene homolog

### Calculated MW:

21 kDa

### Observed MW:

21-24 kDa

### Purification Method:

Antigen affinity purification

### Recommended Dilutions:

WB 1:500-1:1000

IHC 1:50-1:500

IF/ICC 1:200-1:800

## Applications

### Tested Applications:

WB, IHC, IF/ICC, FC (Intra), ELISA

### Cited Applications:

WB

### Species Specificity:

human, mouse

### Cited Species:

human

### Positive Controls:

WB: NIH/3T3 cells,

IHC: human stomach tissue,

IF/ICC: HeLa cells,

**Note-IHC: suggested antigen retrieval with TE buffer pH 9.0; (\*) Alternatively, antigen retrieval may be performed with citrate buffer pH 6.0**

## Background Information

RAS (derived from 'RAr Sarcoma' virus) gene family includes KRAS, HRAS, and NRAS. These genes encode very similar 21 kDa proteins and are homologs of rodent sarcoma virus genes that have transforming abilities. KRAS has two isoforms, 4A and 4B. This antibody is specific for KRAS-4A, which is also named as KRAS-2A.

## Notable Publications

Author	Pubmed ID	Journal	Application
Andrew M Waters	28951536	Sci Signal	WB
Sascha Röth	32668202	Cell Chem Biol	WB
Kristen M Rehl	37666666	Life Sci Alliance	WB

## Storage

### Storage:

Store at -20°C. Stable for one year after shipment.

### Storage Buffer:

PBS with 0.02% sodium azide and 50% glycerol pH 7.3.

Aliquoting is unnecessary for -20°C storage

\*\*\* 20ul sizes contain 0.1% BSA

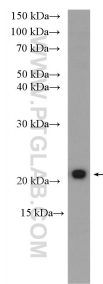
For technical support and original validation data for this product please contact:

T: 1 (888) 4PTGLAB (1-888-478-4522) (toll free in USA), or 1(312) 455-8498 (outside USA)

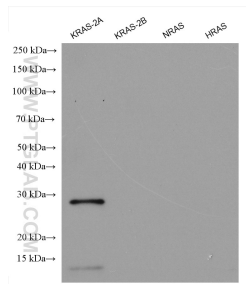
E: [proteintech@ptglab.com](mailto:proteintech@ptglab.com)  
W: [ptglab.com](http://ptglab.com)

This product is exclusively available under Proteintech Group brand and is not available to purchase from any other manufacturer.

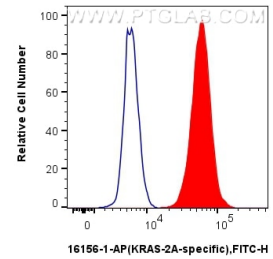
## Selected Validation Data



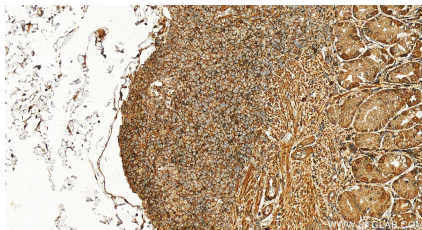
NIH/3T3 cells were subjected to SDS PAGE followed by western blot with 16156-1-AP (KRAS-2A-specific antibody) at dilution of 1:600 incubated at room temperature for 1.5 hours.



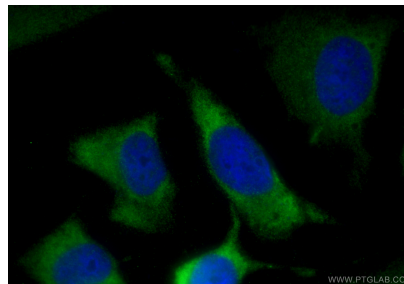
Recombinant proteins (ag27444 (6\*His tag-KRAS-2A), ag21645(6\*His tag-KRAS-2B), ag29746(6\*His tag-NRAS), ag23265(GST-HRAS)) were subjected to SDS PAGE followed by western blot with 16155-1-AP (KRAS-2B-specific antibody) at dilution of 1:2000 incubated at room temperature for 1.5 hours.



1X10<sup>6</sup> HeLa cells were intracellularly stained with 0.4 ug Anti-Human KRAS-2A-specific (16156-1-AP) and CoraLite®488-Conjugated AffiniPure Goat Anti-Rabbit IgG(H+L) at dilution 1:1000 (red), or 0.4 ug Rabbit IgG control Rabbit PolyAb (30000-O-AP, Clone: ) (blue). Cells were fixed with 4% PFA and permeabilized with Flow Cytometry Perm Buffer (PF00011-C).



Immunohistochemical analysis of paraffin-embedded human stomach tissue slide using 16156-1-AP (KRAS-2A-specific antibody) at dilution of 1:200 (under 20x lens). Heat mediated antigen retrieval with Tris-EDTA buffer (pH 9.0).



Immunofluorescent analysis of (-20°C Ethanol) fixed HeLa cells using KRAS-2A-specific antibody (16156-1-AP) at dilution of 1:400 and Multi-rAb CoraLite® Plus 488-Goat Anti-Rabbit Recombinant Secondary Antibody (H+L) (RGAR002).