

For Research Use Only

PSEN2-Specific Polyclonal antibody

Catalog Number: 16168-1-AP

Featured Product

2 Publications



Basic Information

Catalog Number:

16168-1-AP

Size:

150ul, Concentration: 650 ug/ml by Nanodrop;

Source:

Rabbit

Isotype:

IgG

GenBank Accession Number:

NM_000447

GeneID (NCBI):

5664

UNIPROT ID:

P49810

Full Name:

presenilin 2 (Alzheimer disease 4)

Calculated MW:

50 kDa

Observed MW:

55-60 kDa

Purification Method:

Antigen affinity purification

Recommended Dilutions:

WB 1:300-1:800

IHC 1:20-1:200

Applications

Tested Applications:

WB, IHC, ELISA

Cited Applications:

WB

Species Specificity:

human, mouse, rat

Cited Species:

mouse

Positive Controls:

WB : C6 cells, A549 cells, NIH/3T3 cells

IHC : human kidney tissue, human placenta tissue, human colon tissue, mouse brain tissue, human breast cancer tissue

Note-IHC: suggested antigen retrieval with TE buffer pH 9.0; (*) Alternatively, antigen retrieval may be performed with citrate buffer pH 6.0

Background Information

Presenilins can regulate APP processing through their effects on gamma-secretase, an enzyme that cleaves APP. These transmembrane proteins are considered to be involved in early onset of Alzheimer's disease. Presenilin 2 mainly localizes in large neurons. It exists in a heterodimeric complex formed from the endoproteolytically processed amino-terminal (34 kDa) and carboxy-terminal (about 23 kDa) fragments. This antibody is specific to presenilin 2. It will not bind presenilin 1.

Notable Publications

Author	Pubmed ID	Journal	Application
Jinghua Jin	36683147	Gut Microbes	WB
Bhupender Sharma	38595288	Neural Regen Res	WB

Storage

Storage:

Store at -20°C. Stable for one year after shipment.

Storage Buffer:

PBS with 0.02% sodium azide and 50% glycerol pH 7.3.

Aliquoting is unnecessary for -20°C storage

*** 20ul sizes contain 0.1% BSA

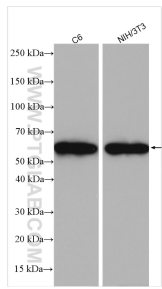
For technical support and original validation data for this product please contact:

T: 1 (888) 4PTGLAB (1-888-478-4522) (toll free in USA), or 1(312) 455-8498 (outside USA)

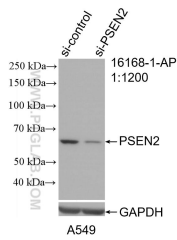
E: proteintech@ptglab.com
W: ptglab.com

This product is exclusively available under Proteintech Group brand and is not available to purchase from any other manufacturer.

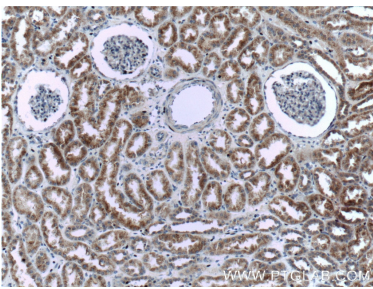
Selected Validation Data



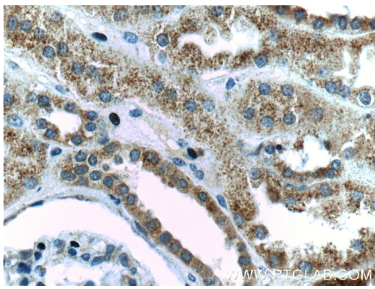
Various lysates were subjected to SDS PAGE followed by western blot with 16168-1-AP (PSEN2-Specific antibody) at dilution of 1:800 incubated at room temperature for 1.5 hours.



WB result of PSEN2-Specific antibody (16168-1-AP; 1:1200; incubated at room temperature for 1.5 hours) with sh-Control and sh-PSEN2-Specific transfected A549 cells.



Immunohistochemical analysis of paraffin-embedded human kidney tissue slide using 16168-1-AP (PSEN2-Specific Antibody) at dilution of 1:200 (under 10x lens).



Immunohistochemical analysis of paraffin-embedded human kidney tissue slide using 16168-1-AP (PSEN2-Specific Antibody) at dilution of 1:200 (under 40x lens).