

For Research Use Only

# PSEN2-Specific Polyclonal antibody, PBS Only

Catalog Number: 16168-1-PBS

Featured Product



## Basic Information

### Catalog Number:

16168-1-PBS

### Size:

100ug, Concentration: 1mg/ml by  
Nanodrop;

### Source:

Rabbit

### Isotype:

IgG

### GenBank Accession Number:

NM\_000447

### GeneID (NCBI):

5664

### UNIPROT ID:

P49810

### Full Name:

presenilin 2 (Alzheimer disease 4)

### Calculated MW:

50 kDa

### Observed MW:

55-60 kDa

### Purification Method:

Antigen affinity purification

## Applications

### Tested Applications:

WB, IHC, ELISA

### Species Specificity:

human, mouse, rat

## Background Information

Presenilins can regulate APP processing through their effects on gamma-secretase, an enzyme that cleaves APP. These transmembrane proteins are considered to be involved in early onset of Alzheimer's disease. Presenilin 2 mainly localizes in large neurons. It exists in a heterodimeric complex formed from the endoproteolytically processed amino-terminal (34 kDa) and carboxy-terminal (about 23 kDa) fragments. This antibody is specific to presenilin 2. It will not bind presenilin 1.

## Storage

### Storage:

Store at -80°C.

### Storage Buffer:

PBS only, pH7.3

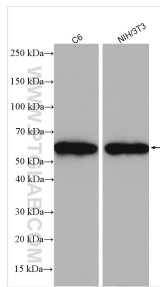
For technical support and original validation data for this product please contact:

T: 1 (888) 4PTGLAB (1-888-478-4522) (toll free  
in USA), or 1(312) 455-8498 (outside USA)

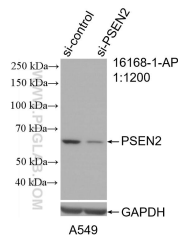
E: [proteintech@ptglab.com](mailto:proteintech@ptglab.com)  
W: [ptglab.com](http://ptglab.com)

This product is exclusively available under Proteintech Group brand and is not available to purchase from any other manufacturer.

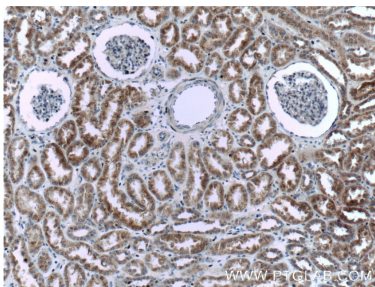
Selected Validation Data



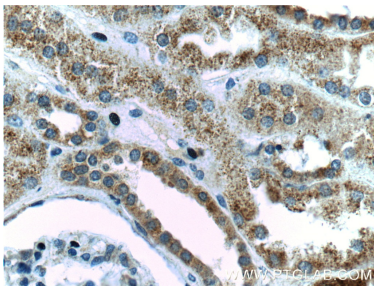
Various lysates were subjected to SDS PAGE followed by western blot with 16168-1-AP (PSEN2-Specific antibody) at dilution of 1:800 incubated at room temperature for 1.5 hours. This data was developed using the same antibody clone with 16168-1-PBS in a different storage buffer formulation.



WB result of PSEN2-Specific antibody (16168-1-AP; 1:1200; incubated at room temperature for 1.5 hours) with sh-Control and sh-PSEN2-Specific transfected A549 cells. This data was developed using the same antibody clone with 16168-1-PBS in a different storage buffer formulation.



Immunohistochemical analysis of paraffin-embedded human kidney tissue slide using 16168-1-AP (PSEN2-Specific Antibody) at dilution of 1:200 (under 10x lens). This data was developed using the same antibody clone with 16168-1-PBS in a different storage buffer formulation.



Immunohistochemical analysis of paraffin-embedded human kidney tissue slide using 16168-1-AP (PSEN2-Specific Antibody) at dilution of 1:200 (under 40x lens). This data was developed using the same antibody clone with 16168-1-PBS in a different storage buffer formulation.