

For Research Use Only

MDM1-Specific Polyclonal antibody

Catalog Number: 16171-1-AP



Basic Information

Catalog Number: 16171-1-AP	GenBank Accession Number: NM_020128	Purification Method: Antigen affinity purification
Size: 150ul , Concentration: 700 µg/ml by Nanodrop and 360 µg/ml by Bradford method using BSA as the standard;	GeneID (NCBI): 56890	Recommended Dilutions: WB 1:500-1:2000
Source: Rabbit	Full Name: Mdm1 nuclear protein homolog (mouse)	
Isotype: IgG	Calculated MW: 81 kDa	
	Observed MW: 81 kDa	

Applications

Tested Applications: WB, ELISA	Positive Controls: WB : human brain tissue,
Species Specificity: human, mouse, rat	

Background Information

Storage

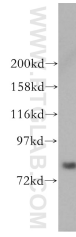
Storage:
Store at -20°C. Stable for one year after shipment.
Storage Buffer:
PBS with 0.02% sodium azide and 50% glycerol pH 7.3.
Aliquoting is unnecessary for -20°C storage

*** 20ul sizes contain 0.1% BSA

For technical support and original validation data for this product please contact:
T: 1 (888) 4PTGLAB (1-888-478-4522) (toll free in USA), or 1(312) 455-8498 (outside USA)
E: proteintech@ptglab.com
W: ptglab.com

This product is exclusively available under Proteintech Group brand and is not available to purchase from any other manufacturer.

Selected Validation Data



human brain tissue were subjected to SDS PAGE followed by western blot with 16171-1-AP (MDM1-Specific antibody) at dilution of 1:300 incubated at room temperature for 1.5 hours.