

For Research Use Only

Lin28B-specific Polyclonal antibody

Catalog Number: 16178-1-AP

Featured Product

21 Publications



Basic Information

Catalog Number:

16178-1-AP

Size:

150ul, Concentration: 900 ug/ml by Nanodrop;

Source:

Rabbit

Isotype:

IgG

GenBank Accession Number:

NM_001004317

GeneID (NCBI):

389421

UNIPROT ID:

Q6ZN17

Full Name:

lin-28 homolog B (C. elegans)

Calculated MW:

28 kDa

Observed MW:

27 kDa

Purification Method:

Antigen affinity purification

Recommended Dilutions:

IHC 1:50-1:500

IF/ICC 1:10-1:100

Applications

Tested Applications:

IHC, IF/ICC, ELISA

Cited Applications:

WB, IHC, IF

Species Specificity:

human

Cited Species:

human, mouse, rat

Positive Controls:

IHC : human colon cancer tissue, human brain tissue, human spleen tissue, human testis tissue, human kidney tissue, human lung tissue

IF/ICC : HepG2 cells,

Note-IHC: suggested antigen retrieval with *TE buffer pH 9.0*; (*) Alternatively, antigen retrieval may be performed with *citrate buffer pH 6.0*

Background Information

LIN28B, also named as CSDD2, belongs to the lin-28 family. It acts as a suppressor of microRNA (miRNA) biogenesis by specifically binding the precursor let-7 (pre-let-7). LIN28B is specifically expressed in embryonic muscle, neurons, and epithelia, as well as in embryonic carcinoma cells. However, it is suppressed in most adult tissues except for skeletal and cardiac muscle. LIN28B shares 78% sequence identity with LIN28A. This antibody is specific to LIN28B.

Notable Publications

Author	Pubmed ID	Journal	Application
Yoshikawa Takeshi T	24023722	PLoS One	WB,IHC
Tong-Peng Xu	36284068	Gastric Cancer	IHC
S Sangiao-Alvarellos	26494358	Sci Rep	IHC

Storage

Storage:

Store at -20°C. Stable for one year after shipment.

Storage Buffer:

PBS with 0.02% sodium azide and 50% glycerol pH 7.3.

Aliquoting is unnecessary for -20°C storage

***** 20ul sizes contain 0.1%BSA**

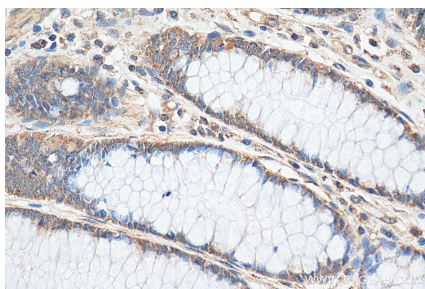
For technical support and original validation data for this product please contact:

T: 1 (888) 4PTGLAB (1-888-478-4522) (toll free in USA), or 1(312) 455-8498 (outside USA)

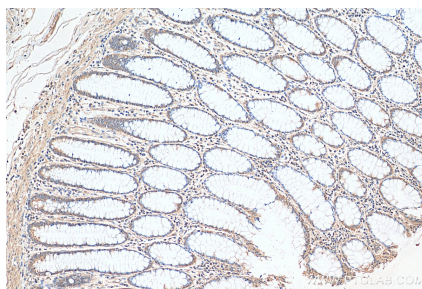
E: proteintech@ptglab.com
W: ptglab.com

This product is exclusively available under Proteintech Group brand and is not available to purchase from any other manufacturer.

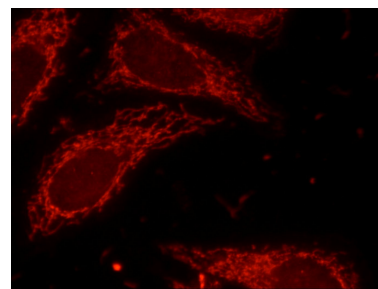
Selected Validation Data



Immunohistochemical analysis of paraffin-embedded human colon cancer tissue slide using 16178-1-AP (Lin28B-specific antibody) at dilution of 1:200 (under 40x lens). Heat mediated antigen retrieval with Tris-EDTA buffer (pH 9.0).



Immunohistochemical analysis of paraffin-embedded human colon cancer tissue slide using 16178-1-AP (Lin28B-specific antibody) at dilution of 1:200 (under 10x lens). Heat mediated antigen retrieval with Tris-EDTA buffer (pH 9.0).



Immunofluorescent analysis of HepG2 cells using 16178-1-AP (Lin28B-specific antibody) at dilution of 1:25 and Rhodamine-Goat anti-Rabbit IgG.