

For Research Use Only

Palladin-Specific Polyclonal antibody

Catalog Number: 16179-1-AP



Basic Information

Catalog Number:

16179-1-AP

Size:

150ul , Concentration: 133 ug/ml by Bradford method using BSA as the standard;

Source:

Rabbit

Isotype:

IgG

GenBank Accession Number:

NM_016081

GeneID (NCBI):

23022

UNIPROT ID:

Q8WX93

Full Name:

palladin, cytoskeletal associated protein

Calculated MW:

151 kDa

Observed MW:

120 kDa

Purification Method:

Antigen affinity purification

Recommended Dilutions:

WB 1:500-1:1000

IP 0.5-4.0 ug for 1.0-3.0 mg of total protein lysate

Applications

Tested Applications:

WB, IP, ELISA

Species Specificity:

human

Positive Controls:

WB : HeLa cells,

IP : HeLa cells,

Background Information

Palladin is a widely expressed protein found in stress fibers, focal adhesions, growth cones, Z-discs, and other actin-based subcellular structures. It belongs to a small gene family that includes the Z-disc proteins myopalladin and myotilin. It is a cytoskeletal protein required for organization of normal actin cytoskeleton. It functions in establishing cell morphology, motility, cell adhesion and cell-extracellular matrix interactions in a variety of cell types. This antibody, generated against N-terminal peptide of palladin, recognizes 200 kDa, 140 kDa, and 65 kDa isoforms of this protein.

Storage

Storage:

Store at -20°C. Stable for one year after shipment.

Storage Buffer:

PBS with 0.02% sodium azide and 50% glycerol pH 7.3.

Aliquoting is unnecessary for -20°C storage

*** 20ul sizes contain 0.1% BSA

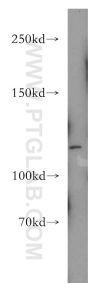
For technical support and original validation data for this product please contact:

T: 1 (888) 4PTGLAB (1-888-478-4522) (toll free in USA), or 1(312) 455-8498 (outside USA)

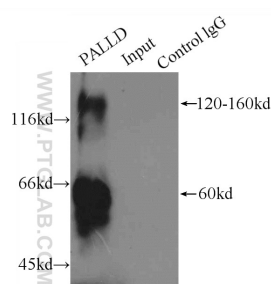
E: proteintech@ptglab.com
W: ptglab.com

This product is exclusively available under Proteintech Group brand and is not available to purchase from any other manufacturer.

Selected Validation Data



HeLa cells were subjected to SDS PAGE followed by western blot with 16179-1-AP (Palladin-Specific antibody) at dilution of 1:200 incubated at room temperature for 1.5 hours.



IP result of anti-Palladin-Specific (IP:16179-1-AP, 4ug; Detection:16179-1-AP 1:200) with HeLa cells lysate 1500ug.