

For Research Use Only

# MYPN-Specific Polyclonal antibody, PBS Only

Catalog Number: 16180-1-PBS



## Basic Information

**Catalog Number:**

16180-1-PBS

**Size:**

100ug, Concentration: 1 mg/ml by Nanodrop;

**Source:**

Rabbit

**Isotype:**

IgG

**GenBank Accession Number:**

NM\_032578

**GeneID (NCBI):**

84665

**UNIPROT ID:**

Q86TC9

**Full Name:**

myopalladin

**Calculated MW:**

145 kDa

**Observed MW:**

145 kDa

**Purification Method:**

Antigen affinity purification

## Applications

**Tested Applications:**

WB, IHC, IF/ICC, Indirect ELISA

**Species Specificity:**

human

## Background Information

MYPN is a component of the sarcomere that tethers nebulin in skeletal muscle and nebulin in cardiac muscle to alpha-actinin at the Z lines (from OMIM). Myopalladin and palladin share C-terminal fragment in sequence. While myopalladin are most abundant in skeletal and cardiac muscle, palladin is ubiquitously expressed in the organs of developing vertebrates. This antibody is specific to myopalladin.

## Storage

**Storage:**

Store at -80°C.

**Storage Buffer:**

PBS only, pH7.3

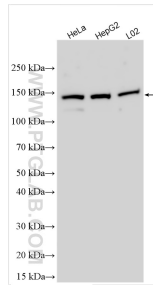
For technical support and original validation data for this product please contact:

T: 1 (888) 4PTGLAB (1-888-478-4522) (toll free in USA), or 1(312) 455-8498 (outside USA)

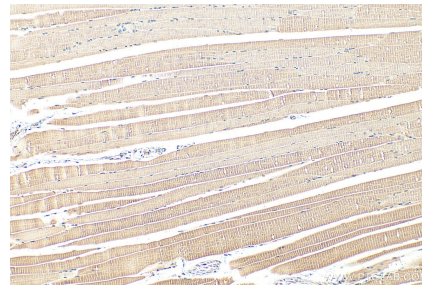
E: [proteintech@ptglab.com](mailto:proteintech@ptglab.com)  
W: [ptglab.com](http://ptglab.com)

This product is exclusively available under Proteintech Group brand and is not available to purchase from any other manufacturer.

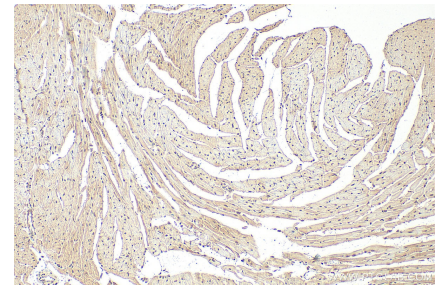
## Selected Validation Data



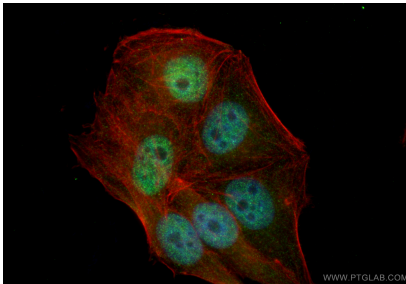
Various lysates were subjected to SDS PAGE followed by western blot with 16180-1-AP (MYPN-Specific antibody) at dilution of 1:1000 incubated at room temperature for 1.5 hours. This data was developed using the same antibody clone with 16180-1-PBS in a different storage buffer formulation.



Immunohistochemical analysis of paraffin-embedded mouse skeletal muscle tissue slide using 16180-1-AP (MYPN-Specific antibody) at dilution of 1:200 (under 10x lens). Heat mediated antigen retrieval with Tris-EDTA buffer (pH 9.0). This data was developed using the same antibody clone with 16180-1-PBS in a different storage buffer formulation.



Immunohistochemical analysis of paraffin-embedded mouse heart tissue slide using 16180-1-AP (MYPN-Specific antibody) at dilution of 1:200 (under 10x lens). Heat mediated antigen retrieval with Tris-EDTA buffer (pH 9.0). This data was developed using the same antibody clone with 16180-1-PBS in a different storage buffer formulation.



Immunofluorescent analysis of (4% PFA) fixed HepG2 cells using MYPN-Specific antibody (16180-1-AP) at dilution of 1:200 and CoraLite@488-Conjugated Goat Anti-Rabbit IgG(H+L) (SA00013-2), CL594-phalloidin (red). This data was developed using the same antibody clone with 16180-1-PBS in a different storage buffer formulation.