

For Research Use Only

ALAS1 Polyclonal antibody

Catalog Number: 16200-1-AP

7 Publications



Basic Information

Catalog Number: 16200-1-AP	GenBank Accession Number: BC011798	Purification Method: Antigen affinity purification
Size: 150ul , Concentration: 350 µg/ml by Nanodrop and 267 µg/ml by Bradford method using BSA as the standard;	GeneID (NCBI): 211	Recommended Dilutions: WB 1:1000-1:4000 IF 1:50-1:500
Source: Rabbit	Full Name: aminolevulinate, delta-, synthase 1	
Isotype: IgG	Calculated MW: 640 aa, 71 kDa	
Immunogen Catalog Number: AG9126	Observed MW: 70 kDa	

Applications

Tested Applications: IF, WB, ELISA	Positive Controls: WB : HeLa cells, Raji cells
Cited Applications: IF, WB	IF : HepG2 cells,
Species Specificity: human, mouse, rat	
Cited Species: human, rat	

Background Information

Notable Publications

Author	Pubmed ID	Journal	Application
Ying Wang	34707288	Nature	WB
Zuoyan Wang	33656082	Arq Bras Cardiol	WB
Jingwei Zhang	34249128	Evid Based Complement Alternat Med	WB

Storage

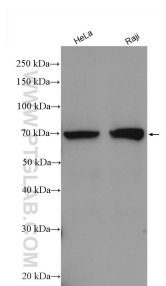
Storage:
Store at -20°C. Stable for one year after shipment.
Storage Buffer:
PBS with 0.02% sodium azide and 50% glycerol pH 7.3.
Aliquoting is unnecessary for -20°C storage

*** 20ul sizes contain 0.1% BSA

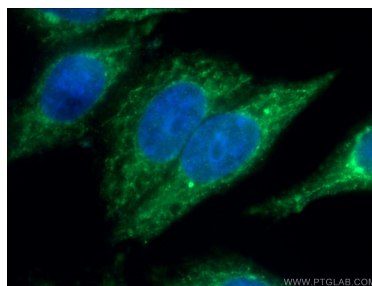
For technical support and original validation data for this product please contact:
T: 1 (888) 4PTGLAB (1-888-478-4522) (toll free in USA), or 1(312) 455-8498 (outside USA)
E: proteintech@ptglab.com
W: ptglab.com

This product is exclusively available under Proteintech Group brand and is not available to purchase from any other manufacturer.

Selected Validation Data



Various lysates were subjected to SDS PAGE followed by western blot with 16200-1-AP (ALAS1 antibody) at dilution of 1:2000 incubated at room temperature for 1.5 hours.



Immunofluorescent analysis of (-20°C Ethanol) fixed HepG2 cells using 16200-1-AP (ALAS1 antibody) at dilution of 1:50 and Alexa Fluor 488-conjugated AffiniPure Goat Anti-Rabbit IgG(H+L).