

For Research Use Only

PLEKHM1 Polyclonal antibody

Catalog Number: 16202-1-AP **2 Publications**



Basic Information

| | | |
|---|---|--|
| Catalog Number: 16202-1-AP | GenBank Accession Number: BC064361 | Purification Method: Antigen affinity purification |
| Size: 150ul, Concentration: 450 µg/ml by Nanodrop and 267 µg/ml by Bradford method using BSA as the standard; | GeneID (NCBI): 9842 | Recommended Dilutions: WB 1:200-1:1000 IHC 1:50-1:500 |
| Source: Rabbit | Full Name: pleckstrin homology domain containing, family M (with RUN domain) member 1 | |
| Isotype: IgG | Calculated MW: 117 kDa | |
| Immunogen Catalog Number: AG9145 | Observed MW: 117 kDa | |

Applications

| | |
|--|--|
| Tested Applications: IHC, WB, ELISA | Positive Controls: WB: ROS1728 cells, mouse liver tissue |
| Cited Applications: WB | IHC: human kidney tissue, human liver cancer tissue, human breast cancer tissue |
| Species Specificity: human, mouse, rat | |
| Cited Species: human, mouse | |

Note-IHC: suggested antigen retrieval with TE buffer pH 9.0; (*) Alternatively, antigen retrieval may be performed with citrate buffer pH 6.0

Background Information

Notable Publications

| Author | Pubmed ID | Journal | Application |
|-------------|-----------|-----------|-------------|
| Hongkun Lin | 35277017 | Nutrients | WB |
| Wang Zheng | 35913916 | Autophagy | WB |

Storage

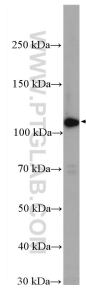
Storage:
Store at -20°C. Stable for one year after shipment.
Storage Buffer:
PBS with 0.02% sodium azide and 50% glycerol pH 7.3.
Aliquoting is unnecessary for -20°C storage

***** 20ul sizes contain 0.1% BSA**

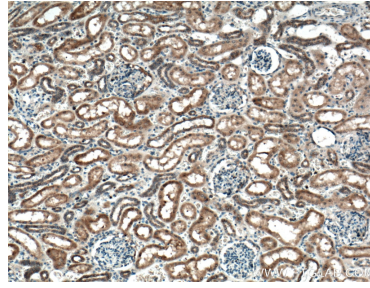
For technical support and original validation data for this product please contact:
T: 1 (888) 4PTGLAB (1-888-478-4522) (toll free in USA), or 1(312) 455-8498 (outside USA)
E: proteintech@ptglab.com
W: ptglab.com

This product is exclusively available under Proteintech Group brand and is not available to purchase from any other manufacturer.

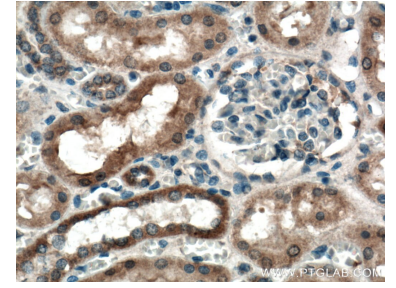
Selected Validation Data



ROS1728 cells were subjected to SDS PAGE followed by western blot with 16202-1-AP (PLEKHM1 antibody) at dilution of 1:300 incubated at room temperature for 1.5 hours.



Immunohistochemical analysis of paraffin-embedded human kidney tissue slide using 16202-1-AP (PLEKHM1 antibody) at dilution of 1:200 (under 10x lens. Heat mediated antigen retrieval with Tris-EDTA buffer (pH 9.0).



Immunohistochemical analysis of paraffin-embedded human kidney tissue slide using 16202-1-AP (PLEKHM1 antibody) at dilution of 1:200 (under 40x lens. Heat mediated antigen retrieval with Tris-EDTA buffer (pH 9.0).