

For Research Use Only

TOE1 Polyclonal antibody

Catalog Number: 16203-1-AP

Featured Product

1 Publications



Basic Information

Catalog Number: 16203-1-AP	GenBank Accession Number: BC009364	Purification Method: Antigen affinity purification
Size: 150ul , Concentration: 500 µg/ml by Nanodrop;	GeneID (NCBI): 114034	Recommended Dilutions: WB 1:1000-1:5000
Source: Rabbit	Full Name: target of EGR1, member 1 (nuclear)	IHC 1:50-1:500
Isotype: IgG	Calculated MW: 510 aa, 57 kDa	IF 1:10-1:100
Immunogen Catalog Number: AG9172	Observed MW: 57 kDa	

Applications

Tested Applications: IF, IHC, WB, ELISA	Positive Controls:
Cited Applications: IF	WB : HEK-293 cells, mouse thymus tissue, HeLa cells, K-562 cells, Jurkat cells
Species Specificity: human, mouse	IHC : human breast cancer tissue, human colon cancer tissue
Cited Species: mouse	IF : HepG2 cells,
Note-IHC: suggested antigen retrieval with TE buffer pH 9.0; (*) Alternatively, antigen retrieval may be performed with citrate buffer pH 6.0	

Background Information

TOE1, also known as hCaf1z, belongs to the DEDD family of deadenylases. TOE1 was initially identified as a direct target gene of ERG1, an immediate early transcription factor. TOE1 encodes an Asp-Glu-Asp-Asp deadenylase that specifically localizes to Cajal bodies in the nucleus, where assembly and maturation of small nuclear ribonucleoprotein particles, and telomerase ribonucleoprotein complex take place (PMID: 36257135). TOE1 has 2 isoforms with the molecular mass of 48 and 57 kDa.

Notable Publications

Author	Pubmed ID	Journal	Application
Hongcheng Wang	36257135	Theriogenology	IF

Storage

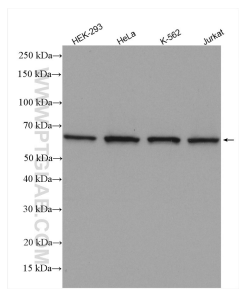
Storage:
Store at -20°C. Stable for one year after shipment.
Storage Buffer:
PBS with 0.02% sodium azide and 50% glycerol pH 7.3.
Aliquoting is unnecessary for -20°C storage

*** 20ul sizes contain 0.1% BSA

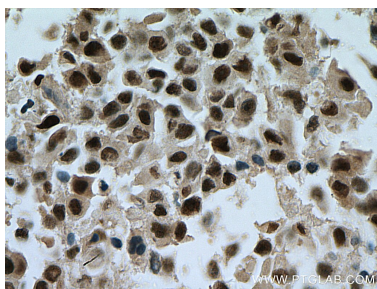
For technical support and original validation data for this product please contact:
T: 1 (888) 4PTGLAB (1-888-478-4522) (toll free in USA), or 1(312) 455-8498 (outside USA)
E: proteintech@ptglab.com
W: ptglab.com

This product is exclusively available under Proteintech Group brand and is not available to purchase from any other manufacturer.

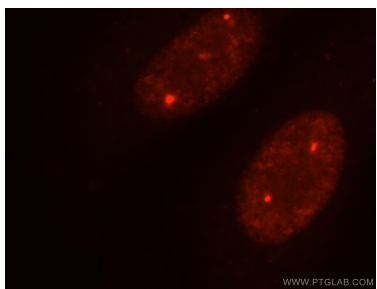
Selected Validation Data



Various lysates were subjected to SDS PAGE followed by western blot with 16203-1-AP (TOE1 antibody) at dilution of 1:2500 incubated at room temperature for 1.5 hours.



Immunohistochemical analysis of paraffin-embedded human breast cancer tissue slide using 16203-1-AP (TOE1 antibody) at dilution of 1:200 (under 40x lens). Heat mediated antigen retrieval with Tris-EDTA buffer (pH 9.0).



Immunofluorescent analysis of HepG2 cells, using TOE1 antibody 16203-1-AP at 1:25 dilution and Rhodamine-labeled goat anti-rabbit IgG (red).