

For Research Use Only

MTF2 Polyclonal antibody

Catalog Number: 16208-1-AP

Featured Product

26 Publications



Basic Information

Catalog Number:

16208-1-AP

Size:

150ul, Concentration: 550 ug/ml by Nanodrop;

Source:

Rabbit

Isotype:

IgG

Immunogen Catalog Number:

AG9182

GenBank Accession Number:

BC010013

GeneID (NCBI):

22823

UNIPROT ID:

Q9Y483

Full Name:

metal response element binding transcription factor 2

Calculated MW:

536 aa, 61 kDa

Observed MW:

67 kDa, 60 kDa, 60-61 kDa

Purification Method:

Antigen affinity purification

Recommended Dilutions:

WB 1:200-1:1000

IP 0.5-4.0 ug for 1.0-3.0 mg of total protein lysate

IHC 1:20-1:200

IF/ICC 1:50-1:200

Applications

Tested Applications:

WB, IHC, IF/ICC, IP, ELISA

Cited Applications:

WB, IHC, IF, IP, ChIP

Species Specificity:

human, mouse, rat

Cited Species:

human, mouse

Note-IHC: suggested antigen retrieval with TE buffer pH 9.0; (*) Alternatively, antigen retrieval may be performed with citrate buffer pH 6.0

Positive Controls:

WB : HepG2 cells, Jurkat cells, mouse ES cells and 293 cells

IP : mouse skeletal muscle tissue,

IHC : human brain tissue,

IF/ICC : mouse ES cells,

Background Information

MTF2, also named as Metal-response element-binding transcription factor 2, is a 593 amino acid protein. It exists several isoforms and the range of the molecular weight of isoforms are about 55-60 kDa and 29 kDa. MTF2 contains 2 PHD-type zinc fingers and belongs to the Polycomblike family. MTF2 acts by binding to H3K36me3, a mark for transcriptional activation, and recruiting the PRC2 complex, leading to enhance PRC2 H3K27me3 methylation activity and regulates the transcriptional networks during embryonic stem cell self-renewal and differentiation.

Notable Publications

Author	Pubmed ID	Journal	Application
Manuel Beltran	31548724	Nat Struct Mol Biol	WB
Evan Healy	31521505	Mol Cell	WB
Haojie Li	28869966	Nature	WB

Storage

Storage:

Store at -20°C. Stable for one year after shipment.

Storage Buffer:

PBS with 0.02% sodium azide and 50% glycerol pH 7.3.

Aliquoting is unnecessary for -20°C storage

*** 20ul sizes contain 0.1% BSA

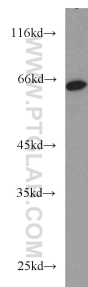
For technical support and original validation data for this product please contact:

T: 1 (888) 4PTGLAB (1-888-478-4522) (toll free in USA), or 1(312) 455-8498 (outside USA)

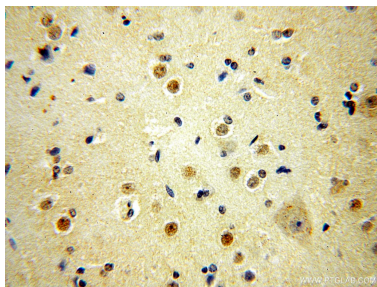
E: proteintech@ptglab.com
W: ptglab.com

This product is exclusively available under Proteintech Group brand and is not available to purchase from any other manufacturer.

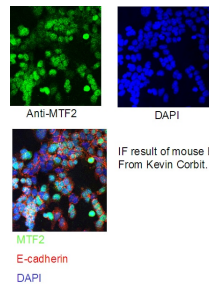
Selected Validation Data



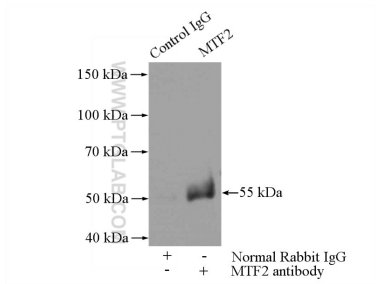
HepG2 cells were subjected to SDS PAGE followed by western blot with 16208-1-AP (MTF2 antibody) at dilution of 1:300 incubated at room temperature for 1.5 hours.



Immunohistochemical analysis of paraffin-embedded human brain using 16208-1-AP (MTF2 antibody) at dilution of 1:50 (under 40x lens).



IF result of mouse ES cell From Kevin Corbit.



IP result of anti-MTF2 (IP:16208-1-AP, 4ug; Detection:16208-1-AP 1:300) with mouse skeletal muscle tissue lysate 4000ug.