

For Research Use Only

HBB Polyclonal antibody

Catalog Number: 16216-1-AP **8 Publications**



Basic Information

Catalog Number: 16216-1-AP	GenBank Accession Number: BC007075	Purification Method: Antigen affinity purification
Size: 150ul , Concentration: 350 µg/ml by Nanodrop and 300 µg/ml by Bradford method using BSA as the standard;	GeneID (NCBI): 3043	Recommended Dilutions: WB 1:1000-1:4000 IHC 1:20-1:200 IF 1:50-1:500
Source: Rabbit	Full Name: hemoglobin, beta	
Isotype: IgG	Calculated MW: 147 aa, 16 kDa	
Immunogen Catalog Number: AG9216	Observed MW: 13-16 kDa	

Applications

Tested Applications:
FC, IF, IHC, WB, ELISA

Cited Applications:
IHC, WB

Species Specificity:
human, mouse

Cited Species:
human, rat, mouse

Note-IHC: suggested antigen retrieval with TE buffer pH 9.0; (*) Alternatively, antigen retrieval may be performed with citrate buffer pH 6.0

Positive Controls:

WB: human heart tissue, human placenta tissue

IHC: human liver tissue,

IF: human appendicitis tissue,

Background Information

The hemoglobin molecule is a tetramer consisting of two alpha- and two beta-globin-like chains. HBB gene encodes hemoglobin beta chain. The hemoglobin chains, each with its own heme moiety, cooperate in binding and release of oxygen. Hemoglobin monomers have been found in blood and other tissues including macrophages, alveolar epithelial cells and brain. Defects in HBB have been linked to diseases including Sickle cell anemia, Beta-thalassemia, and Heinz body anemias. This antibody, raised against the full-length human HBB, recognizes the 13-16 kDa HBB in western blot analyses of human heart and placenta.

Notable Publications

Author	Pubmed ID	Journal	Application
Rozenn Riou	33084574	Elife	WB,IHC
Tasha A Morrison	29227829	Blood Cells Mol Dis	WB
Miguel A Gama Sosa	32415669	J Comp Neurol	IHC

Storage

Storage:

Store at -20°C. Stable for one year after shipment.

Storage Buffer:

PBS with 0.02% sodium azide and 50% glycerol pH 7.3.

Aliquoting is unnecessary for -20°C storage

*** 20ul sizes contain 0.1% BSA

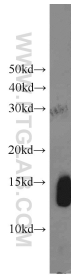
For technical support and original validation data for this product please contact:

T: 1 (888) 4PTGLAB (1-888-478-4522) (toll free in USA), or 1(312) 455-8498 (outside USA)

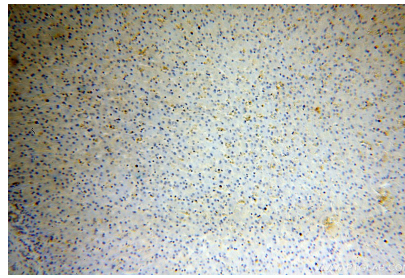
E: proteintech@ptglab.com
W: ptglab.com

This product is exclusively available under Proteintech Group brand and is not available to purchase from any other manufacturer.

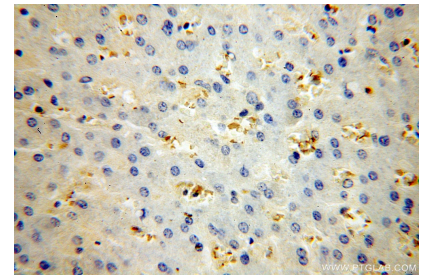
Selected Validation Data



human heart tissue were subjected to SDS PAGE followed by western blot with 16216-1-AP (HBB antibody) at dilution of 1:2000 incubated at room temperature for 1.5 hours.



Immunohistochemical analysis of paraffin-embedded human liver using 16216-1-AP (HBB antibody) at dilution of 1:100 (under 10x lens).



Immunohistochemical analysis of paraffin-embedded human liver using 16216-1-AP (HBB antibody) at dilution of 1:100 (under 40x lens).