

For Research Use Only

PDGFRL Polyclonal antibody

Catalog Number: 16217-1-AP



Basic Information

Catalog Number: 16217-1-AP	GenBank Accession Number: BC010927	Purification Method: Antigen affinity purification
Size: 150ul, Concentration: 1000 µg/ml by Nanodrop and 453 µg/ml by Bradford method using BSA as the standard;	GeneID (NCBI): 5157	Recommended Dilutions: WB 1:500-1:1000 IHC 1:20-1:200 IF 1:20-1:200
Source: Rabbit	Full Name: platelet-derived growth factor receptor-like	
Isotype: IgG	Calculated MW: 375 aa, 42 kDa	
Immunogen Catalog Number: AG9218	Observed MW: 42 kDa	

Applications

Tested Applications:
FC, IF, IHC, WB, ELISA

Species Specificity:
human, mouse, rat

Note-IHC: suggested antigen retrieval with TE buffer pH 9.0; (*) Alternatively, antigen retrieval may be performed with citrate buffer pH 6.0

Positive Controls:

WB: L02 cells, mouse liver tissue

IHC: human liver cancer tissue, mouse liver tissue

IF: L02 cells,

Background Information

Storage

Storage:

Store at -20°C. Stable for one year after shipment.

Storage Buffer:

PBS with 0.02% sodium azide and 50% glycerol pH 7.3.

Aliquoting is unnecessary for -20°C storage

***** 20ul sizes contain 0.1% BSA**

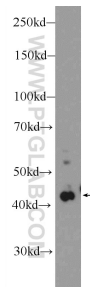
For technical support and original validation data for this product please contact:

T: 1 (888) 4PTGLAB (1-888-478-4522) (toll free in USA), or 1(312) 455-8498 (outside USA)

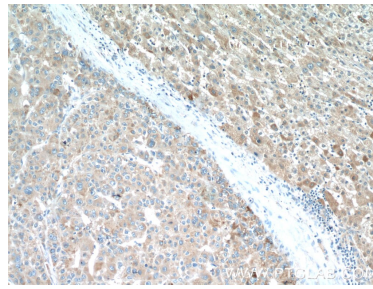
E: proteintech@ptglab.com
W: ptglab.com

This product is exclusively available under Proteintech Group brand and is not available to purchase from any other manufacturer.

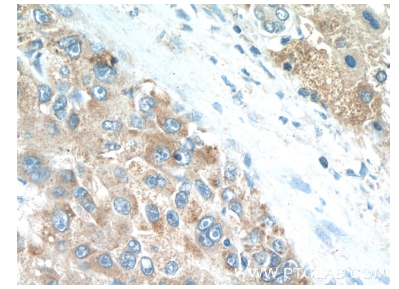
Selected Validation Data



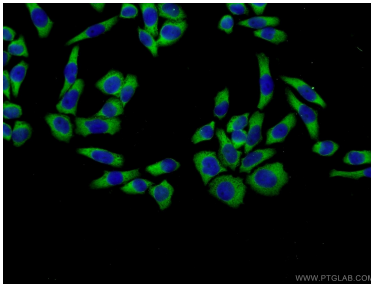
L02 cells were subjected to SDS PAGE followed by western blot with 16217-1-AP (PDGFRL Antibody) at dilution of 1:600 incubated at room temperature for 1.5 hours.



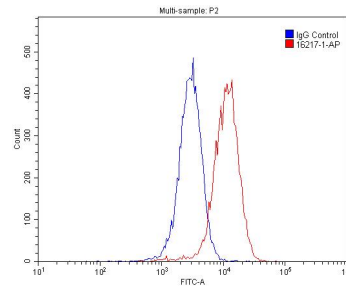
Immunohistochemical analysis of paraffin-embedded human liver cancer tissue slide using 16217-1-AP (PDGFRL Antibody) at dilution of 1:50 (under 10x lens).



Immunohistochemical analysis of paraffin-embedded human liver cancer tissue slide using 16217-1-AP (PDGFRL Antibody) at dilution of 1:50 (under 40x lens).



Immunofluorescent analysis of L02 cells using 16217-1-AP (PDGFRL antibody) at dilution of 1:50 and Alexa Fluor 488-conjugated AffiniPure Goat Anti-Rabbit IgG(H+L).



1×10^6 HepG2 cells were stained with .2ug PDGFRL antibody (16217-1-AP, red) and control antibody (blue). Cells were fixed with 4% PFA and permeabilized with 0.1% Triton X-100. Alexa Fluor 488-conjugated AffiniPure Goat Anti-Rabbit IgG(H+L) with dilution 1:1500.