

For Research Use Only

LDHAL6A Polyclonal antibody

Catalog Number: 16221-1-AP



Basic Information

Catalog Number:

16221-1-AP

Size:

150ul , Concentration: 550 ug/ml by Nanodrop;

Source:

Rabbit

Isotype:

IgG

Immunogen Catalog Number:

AG9273

GenBank Accession Number:

BC014340

GeneID (NCBI):

160287

UNIPROT ID:

Q6ZMR3

Full Name:

lactate dehydrogenase A-like 6A

Calculated MW:

26 kDa, 37 kDa

Observed MW:

30-36 kDa

Purification Method:

Antigen affinity purification

Recommended Dilutions:

WB 1:500-1:1000

IF/ICC 1:10-1:100

Applications

Tested Applications:

WB, IF/ICC, ELISA

Species Specificity:

human, mouse, rat

Positive Controls:

WB : mouse liver tissue, human brain tissue, Jurkat cells, mouse brain tissue, mouse testis tissue

IF/ICC : Hela cells,

Storage

Storage:

Store at -20°C. Stable for one year after shipment.

Storage Buffer:

PBS with 0.02% sodium azide and 50% glycerol pH 7.3.

Aliquoting is unnecessary for -20°C storage

*** 20ul sizes contain 0.1% BSA

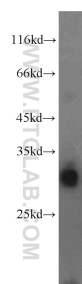
For technical support and original validation data for this product please contact:

T: 1 (888) 4PTGLAB (1-888-478-4522) (toll free in USA), or 1(312) 455-8498 (outside USA)

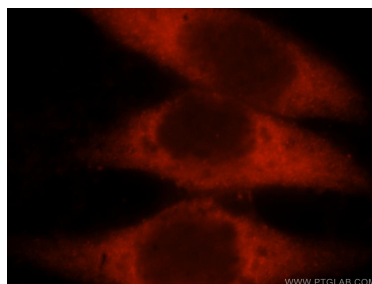
E: proteintech@ptglab.com
W: ptglab.com

This product is exclusively available under Proteintech Group brand and is not available to purchase from any other manufacturer.

Selected Validation Data



mouse liver tissue were subjected to SDS PAGE followed by western blot with 16221-1-AP (LDHAL6A antibody) at dilution of 1:500 incubated at room temperature for 1.5 hours.



Immunofluorescent analysis of HeLa cells, using LDHAL6A antibody 16221-1-AP at 1:25 dilution and Rhodamine-labeled goat anti-rabbit IgG (red).