

For Research Use Only

PDE4A Polyclonal antibody

Catalog Number: 16226-1-AP

Featured Product

10 Publications



Basic Information

Catalog Number:

16226-1-AP

Size:

150ul, Concentration: 1000 ug/ml by Nanodrop and 327 ug/ml by Bradford method using BSA as the standard;

Source:

Rabbit

Isotype:

IgG

Immunogen Catalog Number:

AG8018

GenBank Accession Number:

BC019864

GeneID (NCBI):

5141

UNIPROT ID:

P27815

Full Name:

phosphodiesterase 4A, cAMP-specific (phosphodiesterase E2 duncce homolog, Drosophila)

Calculated MW:

98 kDa

Observed MW:

125-130 kDa

Purification Method:

Antigen affinity purification

Recommended Dilutions:

WB 1:500-1:2000

IP 0.5-4.0 ug for 1.0-3.0 mg of total protein lysate

IHC 1:20-1:200

Applications

Tested Applications:

WB, IP, IHC, ELISA

Cited Applications:

WB, IHC

Species Specificity:

human, mouse

Cited Species:

human, mouse

Note-IHC: suggested antigen retrieval with TE buffer pH 9.0; (*) Alternatively, antigen retrieval may be performed with citrate buffer pH 6.0

Positive Controls:

WB : human brain tissue, HeLa cells

IP : mouse brain tissue,

IHC : human placenta tissue,

Notable Publications

Author	Pubmed ID	Journal	Application
Peter H Schafer	31598889	Drugs R D	IHC
Menbere Wendimu	33705894	Cell Signal	WB
Thays Maria da Conceição Silva Carvalho	33807511	Int J Mol Sci	WB

Storage

Storage:

Store at -20°C. Stable for one year after shipment.

Storage Buffer:

PBS with 0.02% sodium azide and 50% glycerol pH 7.3.

Aliquoting is unnecessary for -20°C storage

*** 20ul sizes contain 0.1% BSA

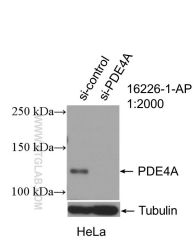
For technical support and original validation data for this product please contact:

T: 1 (888) 4PTGLAB (1-888-478-4522) (toll free in USA), or 1(312) 455-8498 (outside USA)

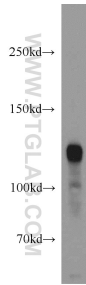
E: proteintech@ptglab.com
W: ptglab.com

This product is exclusively available under Proteintech Group brand and is not available to purchase from any other manufacturer.

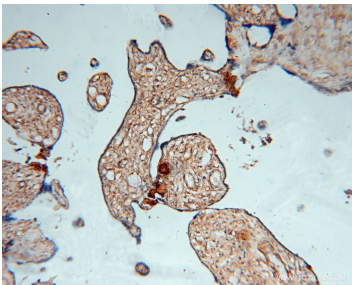
Selected Validation Data



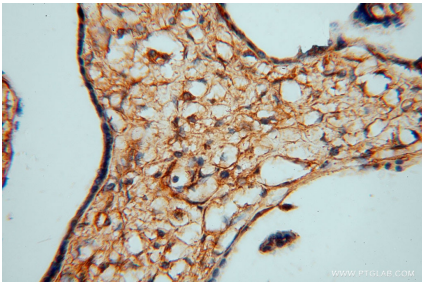
WB result of PDE4A antibody (16226-1-AP; 1:600; incubated at room temperature for 1.5 hours) with sh-Control and sh-PDE4A transfected HeLa cells.



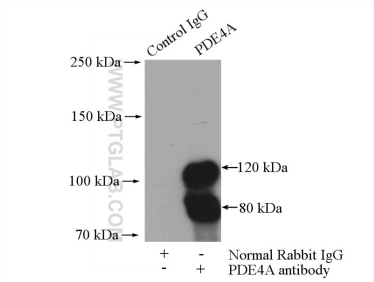
human brain tissue were subjected to SDS PAGE followed by western blot with 16226-1-AP (PDE4A antibody) at dilution of 1:1000 incubated at room temperature for 1.5 hours.



Immunohistochemical analysis of paraffin-embedded human placenta using 16226-1-AP (PDE4A antibody) at dilution of 1:50 (under 10x lens).



Immunohistochemical analysis of paraffin-embedded human placenta using 16226-1-AP (PDE4A antibody) at dilution of 1:50 (under 40x lens).



IP result of anti-PDE4A (IP:16226-1-AP, 4ug; Detection:16226-1-AP 1:300) with mouse brain tissue lysate 4000ug.