

For Research Use Only

ABI3 Polyclonal antibody

Catalog Number: 16227-1-AP



Basic Information

Catalog Number: 16227-1-AP	GenBank Accession Number: BC007780	Purification Method: Antigen affinity purification
Size: 150ul , Concentration: 500 ug/ml by Nanodrop;	GeneID (NCBI): 51225	Recommended Dilutions: WB 1:1000-1:6000 IHC 1:250-1:1000
Source: Rabbit	UNIPROT ID: Q9P2A4	
Isotype: IgG	Full Name: ABI family, member 3	
Immunogen Catalog Number: AG8164	Calculated MW: 366 aa, 39 kDa	
	Observed MW: 50 kDa	

Applications

Tested Applications: WB, IHC, ELISA	Positive Controls:
Species Specificity: human, mouse	WB : HUVEC cells, SK-N-SH cells
Note-IHC: suggested antigen retrieval with TE buffer pH 9.0; (*) Alternatively, antigen retrieval may be performed with citrate buffer pH 6.0	IHC : mouse heart tissue,

Background Information

ABI family member 3 belongs to the ABL Interactors (ABI) family of proteins, which also includes ABI1 and ABI2. ABI proteins are a class of cytoplasmic molecular junction proteins originally identified as binding chaperones for Abl kinase. The ABI3 gene is thought to be an important regulator of microglia during Alzheimer's disease (AD), and its S209F variant increases the risk of developing AD. Moreover, ABI3 plays an important role in suppressing tumor growth and progression.

Storage

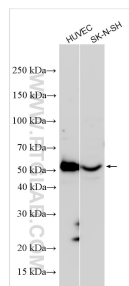
Storage:
Store at -20°C. Stable for one year after shipment.
Storage Buffer:
PBS with 0.02% sodium azide and 50% glycerol pH 7.3.
Aliquoting is unnecessary for -20°C storage

*** 20ul sizes contain 0.1% BSA

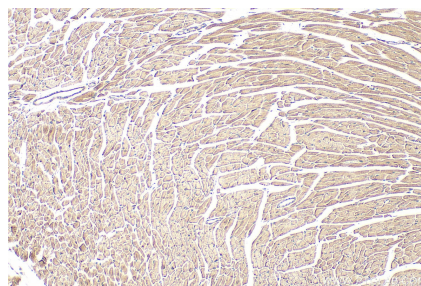
For technical support and original validation data for this product please contact:
T: 1 (888) 4PTGLAB (1-888-478-4522) (toll free in USA), or 1(312) 455-8498 (outside USA)
E: proteintech@ptglab.com
W: ptglab.com

This product is exclusively available under Proteintech Group brand and is not available to purchase from any other manufacturer.

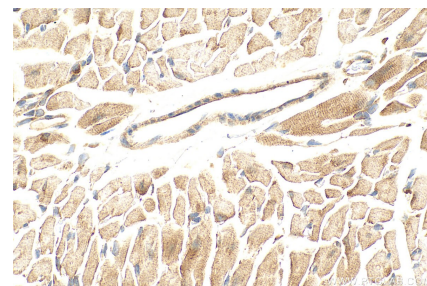
Selected Validation Data



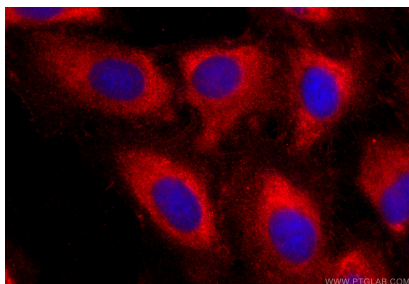
Various lysates were subjected to SDS PAGE followed by western blot with 16227-1-AP (ABL3 antibody) at dilution of 1:3000 incubated at room temperature for 1.5 hours.



Immunohistochemical analysis of paraffin-embedded mouse heart tissue slide using 16227-1-AP (ABL3 antibody) at dilution of 1:500 (under 10x lens). Heat mediated antigen retrieval with Tris-EDTA buffer (pH 9.0).



Immunohistochemical analysis of paraffin-embedded mouse heart tissue slide using 16227-1-AP (ABL3 antibody) at dilution of 1:500 (under 40x lens). Heat mediated antigen retrieval with Tris-EDTA buffer (pH 9.0).



Immunofluorescent analysis of (-20°C Ethanol) fixed U2OS cells using ABL3 antibody (16227-1-AP) at dilution of 1:400 and CoraLite®594-Conjugated Goat Anti-Rabbit IgG(H+L) (SA00013-4).