

For Research Use Only

ABI3 Polyclonal antibody, PBS Only

Catalog Number: 16227-1-PBS



Basic Information

Catalog Number: 16227-1-PBS	GenBank Accession Number: BC007780	Purification Method: Antigen affinity purification
Size: 100ug , Concentration: 1 mg/ml by Nanodrop;	GeneID (NCBI): 51225	
Source: Rabbit	UNIPROT ID: Q9P2A4	
Isotype: IgG	Full Name: ABI family, member 3	
Immunogen Catalog Number: AG8164	Calculated MW: 366 aa, 39 kDa	
	Observed MW: 50 kDa	

Applications

Tested Applications:
WB, IHC, Indirect ELISA

Species Specificity:
human, mouse

Background Information

ABI family member 3 belongs to the ABL Interactors (ABI) family of proteins, which also includes ABI1 and ABI2. ABI proteins are a class of cytoplasmic molecular junction proteins originally identified as binding chaperones for Abl kinase. The ABI3 gene is thought to be an important regulator of microglia during Alzheimer's disease (AD), and its S209F variant increases the risk of developing AD. Moreover, ABI3 plays an important role in suppressing tumor growth and progression.

Storage

Storage:
Store at -80°C.

Storage Buffer:
PBS Only

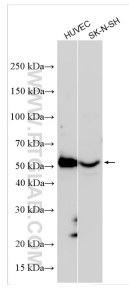
For technical support and original validation data for this product please contact:

T: 1 (888) 4PTGLAB (1-888-478-4522) (toll free in USA), or 1(312) 455-8498 (outside USA)

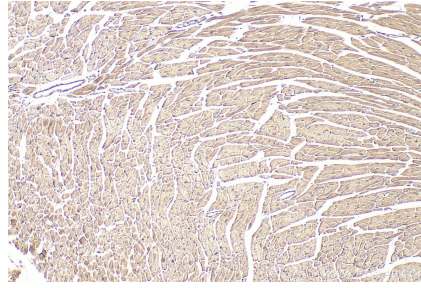
E: proteintech@ptglab.com
W: ptglab.com

This product is exclusively available under Proteintech Group brand and is not available to purchase from any other manufacturer.

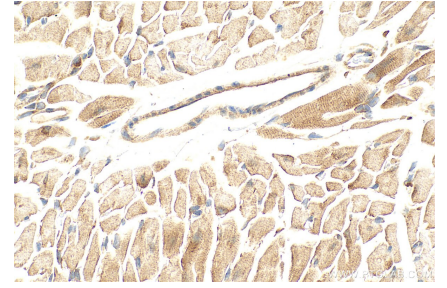
Selected Validation Data



Various lysates were subjected to SDS PAGE followed by western blot with 16227-1-AP (ABI3 antibody) at dilution of 1:3000 incubated at room temperature for 1.5 hours. This data was developed using the same antibody clone with 16227-1-PBS in a different storage buffer formulation.



Immunohistochemical analysis of paraffin-embedded mouse heart tissue slide using 16227-1-AP (ABI3 antibody) at dilution of 1:500 (under 10x lens). Heat mediated antigen retrieval with Tris-EDTA buffer (pH 9.0). This data was developed using the same antibody clone with 16227-1-PBS in a different storage buffer formulation.



Immunohistochemical analysis of paraffin-embedded mouse heart tissue slide using 16227-1-AP (ABI3 antibody) at dilution of 1:500 (under 40x lens). Heat mediated antigen retrieval with Tris-EDTA buffer (pH 9.0). This data was developed using the same antibody clone with 16227-1-PBS in a different storage buffer formulation.