

For Research Use Only

# TINP1 Polyclonal antibody

Catalog Number: 16230-1-AP



## Basic Information

<b>Catalog Number:</b> 16230-1-AP	<b>GenBank Accession Number:</b> BC005288	<b>Purification Method:</b> Antigen affinity purification
<b>Size:</b> 150ul , Concentration: 400 µg/ml by Nanodrop and 267 µg/ml by Bradford method using BSA as the standard;	<b>GeneID (NCBI):</b> 10412	<b>Recommended Dilutions:</b> WB 1:500-1:2000 IHC 1:50-1:500
<b>Source:</b> Rabbit	<b>Full Name:</b> TGF beta-inducible nuclear protein 1	
<b>Isotype:</b> IgG	<b>Calculated MW:</b> 260 aa, 30 kDa	
<b>Immunogen Catalog Number:</b> AG8822	<b>Observed MW:</b> 30 kDa	

## Applications

### Tested Applications:

IHC, WB, ELISA

### Species Specificity:

human, mouse, rat

**Note-IHC: suggested antigen retrieval with TE buffer pH 9.0; (\*) Alternatively, antigen retrieval may be performed with citrate buffer pH 6.0**

### Positive Controls:

WB : A549 cells, Caco-2 cells, HepG2 cells

IHC : human breast cancer tissue, human kidney tissue

## Background Information

TINP1 (TGF beta inducible nuclear protein 1) was widely expressed in various cell lines. TINP1 overexpression significantly promoted tumor cell proliferation, which may be associated with the downregulation of p53 expression. Furthermore, TINP1 promoted a number of cell lines to the S phase of the cell cycle. TINP1 promotes cell proliferation and significantly reduces p53 and p21 expression.

## Storage

### Storage:

Store at -20°C. Stable for one year after shipment.

### Storage Buffer:

PBS with 0.02% sodium azide and 50% glycerol pH 7.3.

Aliquoting is unnecessary for -20°C storage

\*\*\* 20ul sizes contain 0.1% BSA

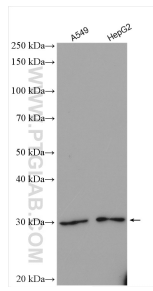
For technical support and original validation data for this product please contact:

T: 1 (888) 4PTGLAB (1-888-478-4522) (toll free in USA), or 1(312) 455-8498 (outside USA)

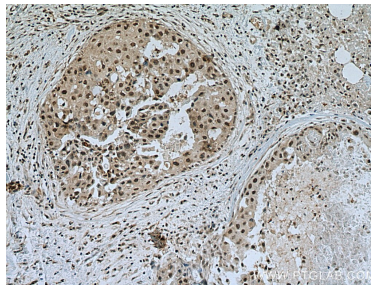
E: [proteintech@ptglab.com](mailto:proteintech@ptglab.com)  
W: [ptglab.com](http://ptglab.com)

This product is exclusively available under Proteintech Group brand and is not available to purchase from any other manufacturer.

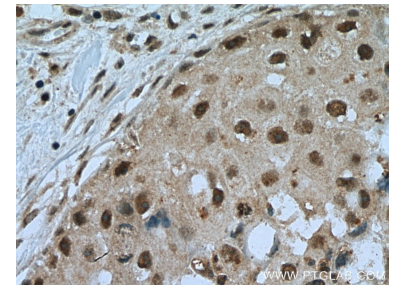
## Selected Validation Data



Various lysates were subjected to SDS PAGE followed by western blot with 16230-1-AP (TINP1 antibody) at dilution of 1:1000 incubated at room temperature for 1.5 hours.



Immunohistochemical analysis of paraffin-embedded human breast cancer tissue slide using 16230-1-AP (TINP1 antibody) at dilution of 1:200 (under 10x lens). Heat mediated antigen retrieval with Tris-EDTA buffer (pH 9.0).



Immunohistochemical analysis of paraffin-embedded human breast cancer tissue slide using 16230-1-AP (TINP1 antibody) at dilution of 1:200 (under 40x lens). Heat mediated antigen retrieval with Tris-EDTA buffer (pH 9.0).