

For Research Use Only

Carboxypeptidase A3 Polyclonal antibody



Catalog Number: 16236-1-AP

1 Publications

Basic Information

Catalog Number: 16236-1-AP	GenBank Accession Number: BC012613	Purification Method: Antigen affinity purification
Size: 150ul , Concentration: 600 µg/ml by Nanodrop and 327 µg/ml by Bradford method using BSA as the standard;	GeneID (NCBI): 1359	Recommended Dilutions: WB 1:500-1:2400 IHC 1:20-1:200
Source: Rabbit	Full Name: carboxypeptidase A3 (mast cell)	
Isotype: IgG	Calculated MW: 417 aa, 49 kDa	
Immunogen Catalog Number: AG8984	Observed MW: 49 kDa	

Applications

Tested Applications: IHC, WB, ELISA	Positive Controls:
Cited Applications: WB	WB : mouse pancreas tissue,
Species Specificity: human, mouse, rat	IHC : human small intestine tissue, human pancreas tissue, human tonsillitis tissue
Cited Species: mouse	
Note-IHC: suggested antigen retrieval with TE buffer pH 9.0; (*) Alternatively, antigen retrieval may be performed with citrate buffer pH 6.0	

Background Information

Notable Publications

Author	Pubmed ID	Journal	Application
Yue Ren	32450152	Am J Pathol	WB

Storage

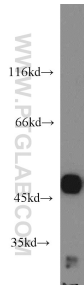
Storage:
Store at -20°C. Stable for one year after shipment.
Storage Buffer:
PBS with 0.02% sodium azide and 50% glycerol pH 7.3.
Aliquoting is unnecessary for -20°C storage

*** 20ul sizes contain 0.1% BSA

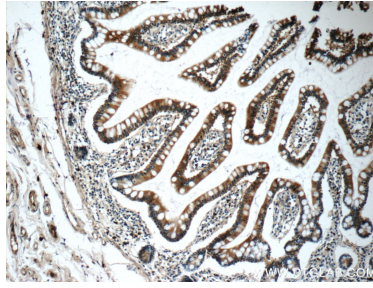
For technical support and original validation data for this product please contact:
T: 1 (888) 4PTGLAB (1-888-478-4522) (toll free in USA), or 1(312) 455-8498 (outside USA)
E: proteintech@ptglab.com
W: ptglab.com

This product is exclusively available under Proteintech Group brand and is not available to purchase from any other manufacturer.

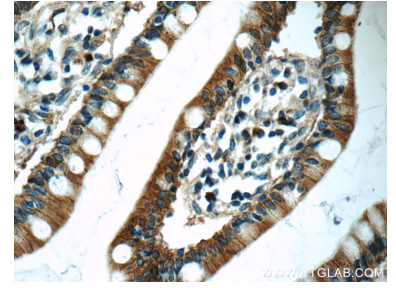
Selected Validation Data



mouse pancreas tissue were subjected to SDS PAGE followed by western blot with 16236-1-AP (Carboxypeptidase A3 antibody) at dilution of 1:1200 incubated at room temperature for 1.5 hours.



Immunohistochemical analysis of paraffin-embedded human small intestine tissue slide using 16236-1-AP (Carboxypeptidase A3 antibody at dilution of 1:50 (under 10x lens).



Immunohistochemical analysis of paraffin-embedded human small intestine tissue slide using 16236-1-AP (Carboxypeptidase A3 antibody at dilution of 1:50 (under 40x lens).