

For Research Use Only

SDSL Polyclonal antibody, PBS Only

Catalog Number: 16242-1-PBS



Basic Information

Catalog Number:

16242-1-PBS

Size:

100ug, Concentration: 1 mg/ml by Nanodrop;

Source:

Rabbit

Isotype:

IgG

Immunogen Catalog Number:

AG9114

GenBank Accession Number:

BC009849

GeneID (NCBI):

113675

UNIPROT ID:

Q96GA7

Full Name:

serine dehydratase-like

Calculated MW:

329 aa, 35 kDa

Observed MW:

55 kDa

Purification Method:

Antigen affinity purification

Applications

Tested Applications:

WB, IHC, IF/ICC, Indirect ELISA

Species Specificity:

human, mouse

Storage

Storage:

Store at -80°C.

Storage Buffer:

PBS Only

For technical support and original validation data for this product please contact:

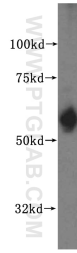
T: 1 (888) 4PTGLAB (1-888-478-4522) (toll free in USA), or 1(312) 455-8498 (outside USA)

E: proteintech@ptglab.com

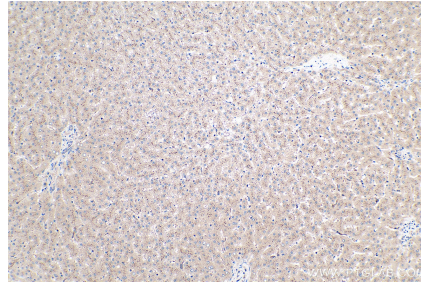
W: ptglab.com

This product is exclusively available under Proteintech Group brand and is not available to purchase from any other manufacturer.

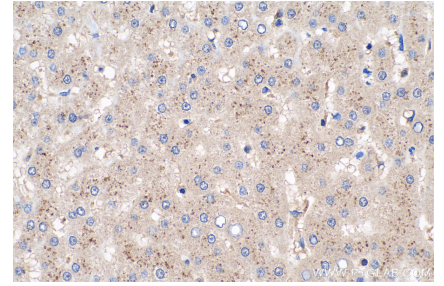
Selected Validation Data



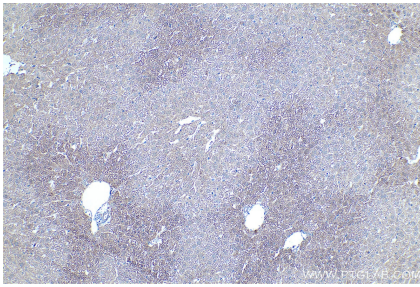
HepG2 cells were subjected to SDS PAGE followed by western blot with 16242-1-AP (SDSL antibody) at dilution of 1:700 incubated at room temperature for 1.5 hours. This data was developed using the same antibody clone with 16242-1-PBS in a different storage buffer formulation.



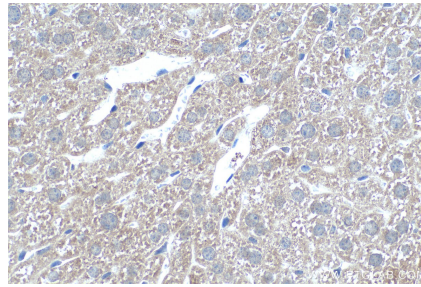
Immunohistochemical analysis of paraffin-embedded human liver tissue slide using 16242-1-AP (SDSL antibody) at dilution of 1:2000 (under 10x lens). Heat mediated antigen retrieval with Tris-EDTA buffer (pH 9.0). This data was developed using the same antibody clone with 16242-1-PBS in a different storage buffer formulation.



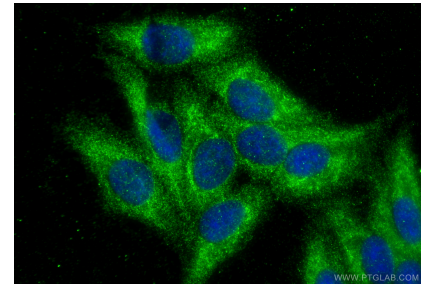
Immunohistochemical analysis of paraffin-embedded human liver tissue slide using 16242-1-AP (SDSL antibody) at dilution of 1:2000 (under 40x lens). Heat mediated antigen retrieval with Tris-EDTA buffer (pH 9.0). This data was developed using the same antibody clone with 16242-1-PBS in a different storage buffer formulation.



Immunohistochemical analysis of paraffin-embedded mouse liver tissue slide using 16242-1-AP (SDSL antibody) at dilution of 1:500 (under 10x lens). Heat mediated antigen retrieval with Tris-EDTA buffer (pH 9.0). This data was developed using the same antibody clone with 16242-1-PBS in a different storage buffer formulation.



Immunohistochemical analysis of paraffin-embedded mouse liver tissue slide using 16242-1-AP (SDSL antibody) at dilution of 1:500 (under 40x lens). Heat mediated antigen retrieval with Tris-EDTA buffer (pH 9.0). This data was developed using the same antibody clone with 16242-1-PBS in a different storage buffer formulation.



Immunofluorescent analysis of (-20°C Ethanol) fixed HepG2 cells using SDSL antibody (16242-1-AP) at dilution of 1:400 and CoraLite®488-Conjugated Goat Anti-Rabbit IgG(H+L) (SA00013-2). This data was developed using the same antibody clone with 16242-1-PBS in a different storage buffer formulation.