

For Research Use Only

# GINS2 Polyclonal antibody

Catalog Number: 16247-1-AP

Featured Product

13 Publications



## Basic Information

### Catalog Number:

16247-1-AP

### Size:

150ul, Concentration: 800 ug/ml by Nanodrop and 387 ug/ml by Bradford method using BSA as the standard;

### Source:

Rabbit

### Isotype:

IgG

### Immunogen Catalog Number:

AG9180

### GenBank Accession Number:

BC010164

### GeneID (NCBI):

51659

### UNIPROT ID:

Q9Y248

### Full Name:

GINS complex subunit 2 (Psf2 homolog)

### Calculated MW:

185 aa, 21 kDa

### Observed MW:

25 kDa

### Purification Method:

Antigen affinity purification

### Recommended Dilutions:

WB 1:1000-1:4000

IHC 1:50-1:500

IF/ICC 1:50-1:500

## Applications

### Tested Applications:

WB, IHC, IF/ICC, FC (Intra), ELISA

### Cited Applications:

WB, IHC, IF

### Species Specificity:

human, mouse, rat

### Cited Species:

human, mouse

**Note-IHC: suggested antigen retrieval with TE buffer pH 9.0; (\*) Alternatively, antigen retrieval may be performed with citrate buffer pH 6.0**

### Positive Controls:

WB : Jurkat cells, HeLa cells, HepG2 cells

IHC : human pancreas cancer tissue,

IF/ICC : Jurkat cells,

## Background Information

GINS2, also named as DNA replication complex GINS protein PSF2, CGI-122, DC5, or HSPC037, is a 185 amino acid protein, which belongs to the GINS2/PSF2 family. The GINS complex plays an essential role in the initiation of DNA replication, and progression of DNA replication forks. GINS complex seems to bind preferentially to single-stranded DNA. GINS2 is a part of the the GINS complex, an integral component of the replicative helicase machinery that facilitates progression of the replisome complex.

## Notable Publications

Author	Pubmed ID	Journal	Application
Radoslaw Szmyd	30190546	Oncogene	WB
Xiaohua Xu	27587400	J Biol Chem	WB
Matilde I. Conte	36345943	JCI Insight	WB

## Storage

### Storage:

Store at -20°C. Stable for one year after shipment.

### Storage Buffer:

PBS with 0.02% sodium azide and 50% glycerol pH 7.3.

Aliquoting is unnecessary for -20°C storage

\*\*\* 20ul sizes contain 0.1% BSA

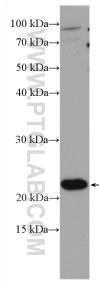
For technical support and original validation data for this product please contact:

T: 1 (888) 4PTGLAB (1-888-478-4522) (toll free in USA), or 1(312) 455-8498 (outside USA)

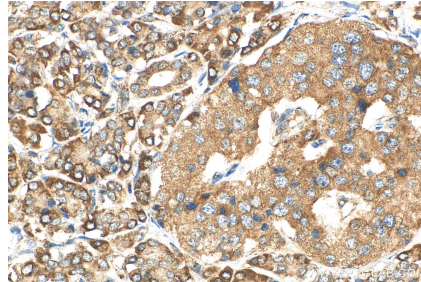
E: proteintech@ptglab.com  
W: ptglab.com

This product is exclusively available under Proteintech Group brand and is not available to purchase from any other manufacturer.

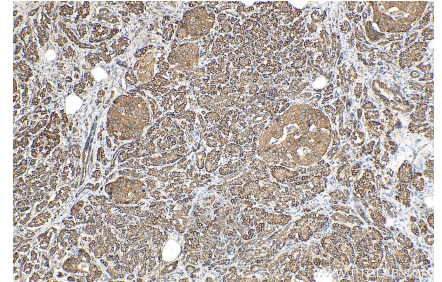
## Selected Validation Data



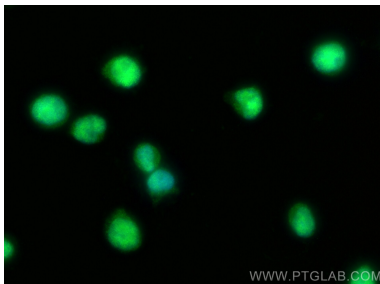
Jurkat cells were subjected to SDS PAGE followed by western blot with 16247-1-AP (PSF2 antibody) at dilution of 1:2000 incubated at room temperature for 1.5 hours.



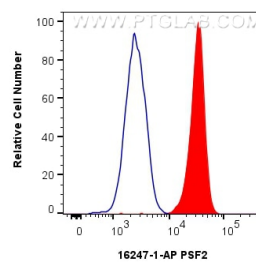
Immunohistochemical analysis of paraffin-embedded human pancreas cancer tissue slide using 16247-1-AP (PSF2 antibody) at dilution of 1:200 (under 40x lens). Heat mediated antigen retrieval with Tris-EDTA buffer (pH 9.0).



Immunohistochemical analysis of paraffin-embedded human pancreas cancer tissue slide using 16247-1-AP (PSF2 antibody) at dilution of 1:200 (under 10x lens). Heat mediated antigen retrieval with Tris-EDTA buffer (pH 9.0).



Immunofluorescent analysis of (4% PFA) fixed Jurkat cells using PSF2 antibody (16247-1-AP) at dilution of 1:200 and Multi-rAb Coralite® Plus 488-Goat Anti-Rabbit Recombinant Secondary Antibody (H+L) (RGAR002).



$1 \times 10^6$  Jurkat cells were intracellularly stained with 0.25  $\mu$ g GINS2 Polyclonal antibody (16247-1-AP) and Coralite® 488-Conjugated Goat Anti-Rabbit IgG(H+L) (SA00013-2)(red), or 0.25  $\mu$ g Rabbit IgG control Rabbit PolyAb (30000-0-AP) (blue). Cells were fixed and permeabilized with Transcription Factor Staining Buffer Kit (PF00011).