

For Research Use Only

LMF2 Polyclonal antibody

Catalog Number: 16249-1-AP



Basic Information

Catalog Number:

16249-1-AP

Size:

150ul, Concentration: 650 ug/ml by Nanodrop and 400 ug/ml by Bradford method using BSA as the standard;

Source:

Rabbit

Isotype:

IgG

Immunogen Catalog Number:

AG9208

GenBank Accession Number:

BC014652

GeneID (NCBI):

91289

UNIPROT ID:

Q9BU23

Full Name:

lipase maturation factor 2

Calculated MW:

682 aa, 77 kDa

Observed MW:

80 kDa

Purification Method:

Antigen affinity purification

Recommended Dilutions:

WB 1:1000-1:4000

IHC 1:20-1:200

IF/ICC 1:10-1:100

Applications

Tested Applications:

WB, IHC, IF/ICC, ELISA

Species Specificity:

human, mouse, rat

Note-IHC: suggested antigen retrieval with TE buffer pH 9.0; (*) Alternatively, antigen retrieval may be performed with citrate buffer pH 6.0

Positive Controls:

WB : HeLa cells, human brain tissue

IHC : human kidney tissue,

IF/ICC : MCF-7 cells,

Storage

Storage:

Store at -20°C. Stable for one year after shipment.

Storage Buffer:

PBS with 0.02% sodium azide and 50% glycerol pH 7.3.

Aliquoting is unnecessary for -20°C storage

*** 20ul sizes contain 0.1% BSA

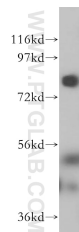
For technical support and original validation data for this product please contact:

T: 1 (888) 4PTGLAB (1-888-478-4522) (toll free in USA), or 1(312) 455-8498 (outside USA)

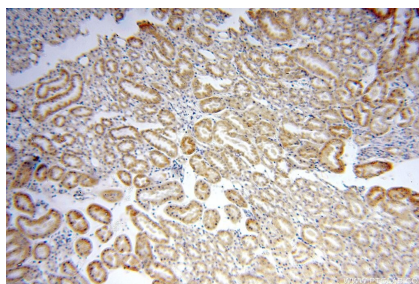
E: proteintech@ptglab.com
W: ptglab.com

This product is exclusively available under Proteintech Group brand and is not available to purchase from any other manufacturer.

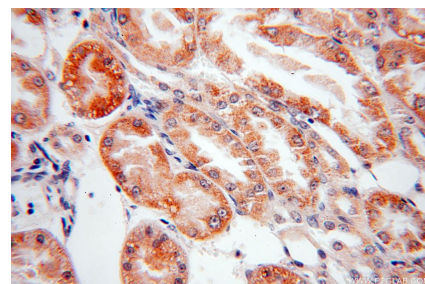
Selected Validation Data



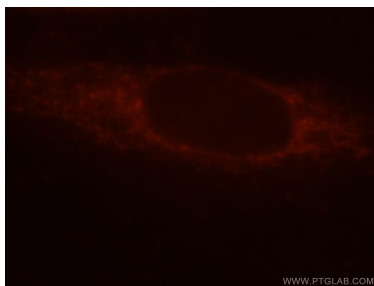
HeLa cells were subjected to SDS PAGE followed by western blot with 16249-1-AP (LMF2 antibody) at dilution of 1:800 incubated at room temperature for 1.5 hours.



Immunohistochemical analysis of paraffin-embedded human kidney using 16249-1-AP (LMF2 antibody) at dilution of 1:100 (under 10x lens).



Immunohistochemical analysis of paraffin-embedded human kidney using 16249-1-AP (LMF2 antibody) at dilution of 1:100 (under 40x lens).



Immunofluorescent analysis of MCF-7 cells, using 16249-1-AP and Rhodamine-labeled goat anti-rabbit IgG (red).