

For Research Use Only

PRKCDBP Polyclonal antibody

Catalog Number: 16250-1-AP

Featured Product

22 Publications



Basic Information

Catalog Number: 16250-1-AP	GenBank Accession Number: BC011585	Purification Method: Antigen affinity purification
Size: 150ul, Concentration: 500 µg/ml by Nanodrop and 313 µg/ml by Bradford method using BSA as the standard;	GeneID (NCBI): 112464	Recommended Dilutions: WB 1:200-1:1000 IP 0.5-4.0 ug for 1.0-3.0 mg of total protein lysate IHC 1:20-1:200 IF 1:10-1:100
Source: Rabbit	Full Name: protein kinase C, delta binding protein	
Isotype: IgG	Calculated MW: 261 aa, 28 kDa	
Immunogen Catalog Number: AG9209	Observed MW: 35-40 kDa	

Applications

Tested Applications:

IF, IHC, IP, WB, ELISA

Cited Applications:

IF, IHC, IP, WB

Species Specificity:

human, mouse, rat

Cited Species:

human, mouse, pig, rat

Note-IHC: suggested antigen retrieval with TE buffer pH 9.0; (*) Alternatively, antigen retrieval may be performed with citrate buffer pH 6.0

Positive Controls:

WB: mouse lung tissue, MCF-7 cells

IP: mouse lung tissue,

IHC: human lung cancer tissue,

IF: MCF-7 cells,

Background Information

Protein kinase C delta-binding protein (PRKCDBP) is a putative tumor suppressor in which alteration has been observed in several human cancers. It is a BRCA1-interacting protein, and may also be involved in DNA damage response and participate in BRCA1-mediated tumor suppression pathways. PKCdelta binds to the C-terminal half of PRKCDBP through the regulatory domain and phosphorylates it in vitro. In COS1 cells, the phosphorylation of over-expressed PRKCDBP is stimulated by 12-O-tetradecanoylphorbol-13-acetate and further enhanced by the over-expression of PKCdelta

Notable Publications

Author	Pubmed ID	Journal	Application
Victor J Hernandez	24069528	Elife	WB, IF
Takuya Taniguchi	27612189	PLoS One	WB
Zhiwei Liao	34476937	ACS Nano	WB

Storage

Storage:

Store at -20°C. Stable for one year after shipment.

Storage Buffer:

PBS with 0.02% sodium azide and 50% glycerol pH 7.3.

Aliquoting is unnecessary for -20°C storage

*** 20ul sizes contain 0.1% BSA

For technical support and original validation data for this product please contact:

T: 1 (888) 4PTGLAB (1-888-478-4522) (toll free in USA), or 1(312) 455-8498 (outside USA)

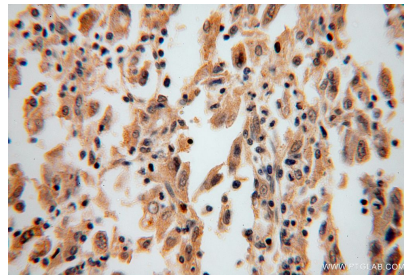
E: proteintech@ptglab.com
W: ptglab.com

This product is exclusively available under Proteintech Group brand and is not available to purchase from any other manufacturer.

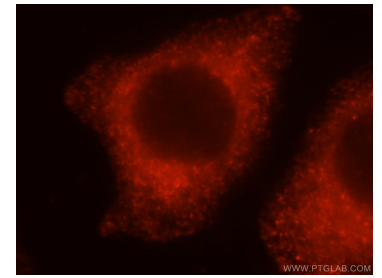
Selected Validation Data



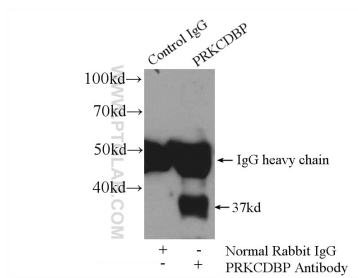
mouse lung tissue were subjected to SDS PAGE followed by western blot with 16250-1-AP (PRKCDBP antibody) at dilution of 1:400 incubated at room temperature for 1.5 hours.



Immunohistochemical analysis of paraffin-embedded human lung cancer using 16250-1-AP (PRKCDBP antibody) at dilution of 1:100 (under 40x lens).



Immunofluorescent analysis of MCF-7 cells, using PRKCDBP antibody 16250-1-AP at 1:25 dilution and Rhodamine-labeled goat anti-rabbit IgG (red).



IP Result of anti-PRKCDBP (IP:16250-1-AP, 4ug; Detection:16250-1-AP 1:600) with mouse lung tissue lysate 2800ug.