

For Research Use Only

PRKCDBP Polyclonal antibody, PBS Only

Catalog Number: 16250-1-PBS

Featured Product



Basic Information

Catalog Number:

16250-1-PBS

Size:

100ug, Concentration: 1 mg/ml by Nanodrop;

Source:

Rabbit

Isotype:

IgG

Immunogen Catalog Number:

AG9209

GenBank Accession Number:

BC011585

GeneID (NCBI):

112464

UNIPROT ID:

Q969G5

Full Name:

protein kinase C, delta binding protein

Calculated MW:

261 aa, 28 kDa

Observed MW:

35-40 kDa

Purification Method:

Antigen affinity purification

Applications

Tested Applications:

WB, IHC, IF/ICC, IP, Indirect ELISA

Species Specificity:

human, mouse, rat

Background Information

Protein kinase C delta-binding protein (PRKCDBP) is a putative tumor suppressor in which alteration has been observed in several human cancers. It is a BRCA1-interacting protein, and may also be involved in DNA damage response and participate in BRCA1-mediated tumor suppression pathways. PKCdelta binds to the C-terminal half of PRKCDBP through the regulatory domain and phosphorylates it in vitro. In COS1 cells, the phosphorylation of over-expressed PRKCDBP is stimulated by 12-O-tetradecanoylphorbol-13-acetate and further enhanced by the over-expression of PKCdelta

Storage

Storage:

Store at -80°C.

Storage Buffer:

PBS only, pH7.3

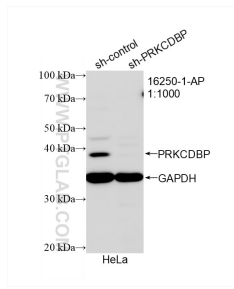
For technical support and original validation data for this product please contact:

T: 1 (888) 4PTGLAB (1-888-478-4522) (toll free in USA), or 1(312) 455-8498 (outside USA)

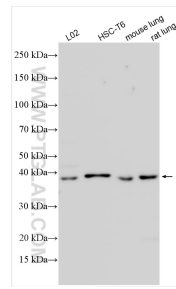
E: proteintech@ptglab.com
W: ptglab.com

This product is exclusively available under Proteintech Group brand and is not available to purchase from any other manufacturer.

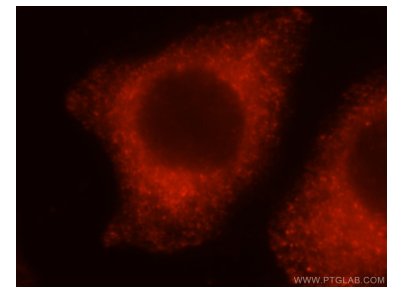
Selected Validation Data



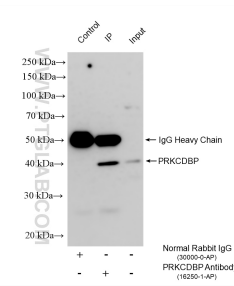
WB result of PRKCDPB antibody (16250-1-AP; 1:1000; incubated at room temperature for 1.5 hours) with sh-Control and sh-PRKCDPB transfected HeLa cells. This data was developed using the same antibody clone with 16250-1-PBS in a different storage buffer formulation.



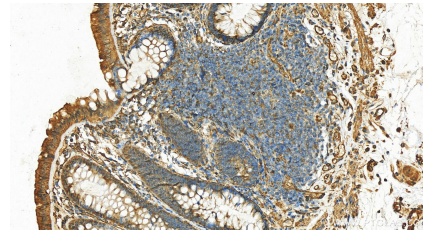
Various lysates were subjected to SDS PAGE followed by western blot with 16250-1-AP (PRKCDPB antibody) at dilution of 1:2000 incubated at room temperature for 1.5 hours. This data was developed using the same antibody clone with 16250-1-PBS in a different storage buffer formulation.



Immunofluorescent analysis of MCF-7 cells, using PRKCDPB antibody 16250-1-AP at 1:25 dilution and Rhodamine-labeled goat anti-rabbit IgG (red). This data was developed using the same antibody clone with 16250-1-PBS in a different storage buffer formulation.



IP result of anti-PRKCDPB (IP:16250-1-AP, 4 μ g; Detection:16250-1-AP 1:1000) with A549 cells lysate 1120 μ g. This data was developed using the same antibody clone with 16250-1-PBS in a different storage buffer formulation.



Immunohistochemical analysis of paraffin-embedded human normal colon slide using 16250-1-AP (PRKCDPB antibody) at dilution of 1:200 (under 20 \times lens). Heat mediated antigen retrieval with Tris-EDTA buffer (pH 9.0). This data was developed using the same antibody clone with 16250-1-PBS in a different storage buffer formulation.