

For Research Use Only

MRPL1 Polyclonal antibody

Catalog Number: 16254-1-AP



Basic Information

Catalog Number: 16254-1-AP	GenBank Accession Number: BC015109	Purification Method: Antigen affinity purification
Size: 150ul , Concentration: 200 µg/ml by Nanodrop and 153 µg/ml by Bradford method using BSA as the standard;	GeneID (NCBI): 65008	Recommended Dilutions: WB 1:500-1:2000
Source: Rabbit	Full Name: mitochondrial ribosomal protein L1	
Isotype: IgG	Calculated MW: 303 aa, 34 kDa	
Immunogen Catalog Number: AG9270	Observed MW: 34 kDa	

Applications

Tested Applications: WB, ELISA	Positive Controls: WB : HeLa cells, HepG2 cells, K-562 cells
Species Specificity: human, mouse, rat	

Background Information

Storage

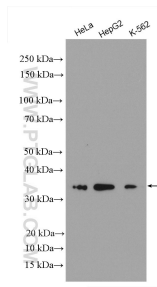
Storage:
Store at -20°C. Stable for one year after shipment.
Storage Buffer:
PBS with 0.02% sodium azide and 50% glycerol pH 7.3.
Aliquoting is unnecessary for -20°C storage

*** 20ul sizes contain 0.1% BSA

For technical support and original validation data for this product please contact:
T: 1 (888) 4PTGLAB (1-888-478-4522) (toll free in USA), or 1(312) 455-8498 (outside USA) E: proteintech@ptglab.com
W: ptglab.com

This product is exclusively available under Proteintech Group brand and is not available to purchase from any other manufacturer.

Selected Validation Data



Various lysates were subjected to SDS PAGE followed by western blot with 16254-1-AP (MRPL1 antibody) at dilution of 1:1000 incubated at room temperature for 1.5 hours.