

For Research Use Only

CHMP4C Polyclonal antibody

Catalog Number: 16256-1-AP

1 Publications



Basic Information

Catalog Number:

16256-1-AP

Size:

150ul, Concentration: 500 ug/ml by Nanodrop;

Source:

Rabbit

Isotype:

IgG

Immunogen Catalog Number:

AG9279

GenBank Accession Number:

BC014321

GeneID (NCBI):

92421

UNIPROT ID:

Q96CF2

Full Name:

chromatin modifying protein 4C

Calculated MW:

233 aa, 26 kDa

Observed MW:

35 kDa

Purification Method:

Antigen affinity purification

Recommended Dilutions:

WB 1:1000-1:4000

Applications

Tested Applications:

WB, ELISA

Cited Applications:

WB, IHC

Species Specificity:

human

Cited Species:

human

Positive Controls:

WB: TT cells,

Background Information

CHMP4C (Charged multivesicular body protein 4c), also known as SHAX3. It is expected to be located in the cytoplasm and membrane, which is expressed in heart, spleen and kidney. CHMP4C is one of the charged multivesicular protein (CHMP), and is involved in the composition of the endosomal sorting complex required for transport III (ESCRT-III), facilitating the necessary separation of daughter cells. CHMP4C has been proposed to be involved in the progression of different carcinomas. The molecular weight of CHMP4C is 26 kDa. Phosphorylated at Ser-210 by AURKB during cytokinesis: together with ZFYVE19/ANCHR, phosphorylated CHMP4C retains abscission-competent VPS4 (VPS4A and/or VPS4B) at the midbody ring until abscission checkpoint signaling is terminated at late cytokinesis.

Notable Publications

Author	Pubmed ID	Journal	Application
Mingde Gao	39005901	Heliyon	WB, IHC

Storage

Storage:

Store at -20°C. Stable for one year after shipment.

Storage Buffer:

PBS with 0.02% sodium azide and 50% glycerol pH 7.3.

Aliquoting is unnecessary for -20°C storage

*** 20ul sizes contain 0.1% BSA

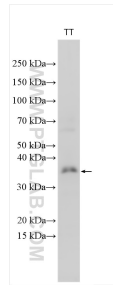
For technical support and original validation data for this product please contact:

T: 1 (888) 4PTGLAB (1-888-478-4522) (toll free in USA), or 1(312) 455-8498 (outside USA)

E: proteintech@ptglab.com
W: ptglab.com

This product is exclusively available under Proteintech Group brand and is not available to purchase from any other manufacturer.

Selected Validation Data



Various lysates were subjected to SDS PAGE followed by western blot with 16256-1-AP (CHMP4C antibody) at dilution of 1:2000 incubated at room temperature for 1.5 hours.