

For Research Use Only

CEP63 Polyclonal antibody

Catalog Number: 16268-1-AP

Featured Product

18 Publications



Basic Information

Catalog Number:

16268-1-AP

Size:

150ul, Concentration: 1000 ug/ml by Nanodrop and 593 ug/ml by Bradford method using BSA as the standard;

Source:

Rabbit

Isotype:

IgG

Immunogen Catalog Number:

AG9335

GenBank Accession Number:

BC014050

GeneID (NCBI):

80254

UNIPROT ID:

Q96MT8

Full Name:

centrosomal protein 63kDa

Calculated MW:

703 aa, 81 kDa

Observed MW:

57-75 kDa

Purification Method:

Antigen affinity purification

Recommended Dilutions:

WB 1:500-1:2000

IP 0.5-4.0 ug for 1.0-3.0 mg of total protein lysate

IF/ICC 1:200-1:800

Applications

Tested Applications:

WB, IF/ICC, IP, ELISA

Cited Applications:

WB, IF, IP

Species Specificity:

human, mouse, rat, canine

Cited Species:

human, mouse

Positive Controls:

WB : HEK-293 cells, mouse liver tissue, HeLa cells, mouse thymus tissue

IP : HEK-293 cells,

IF/ICC : MDCK cells,

Background Information

CEP63 is a 63 kDa centrosomal protein. It is required for normal spindle assembly. It maintains centrosome numbers through centrosomal recruitment of CEP152. CEP63 recruits CDK1 to centrosomes. It plays a role in DNA damage response. This antibody can recognize all the four isoforms of CEP63 (56 kDa, 58 kDa, 63 kDa and 81 kDa).

Notable Publications

Author	Pubmed ID	Journal	Application
Søs Grønbaek Holdgaard	31519908	Nat Commun	IF
Divya Jayaraman	27974163	Neuron	WB,IF
Zhenguang Ying	36280838	BMC Biol	WB,IF

Storage

Storage:

Store at -20°C. Stable for one year after shipment.

Storage Buffer:

PBS with 0.02% sodium azide and 50% glycerol pH 7.3.

Aliquoting is unnecessary for -20°C storage

*** 20ul sizes contain 0.1% BSA

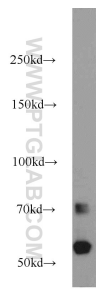
For technical support and original validation data for this product please contact:

T: 1 (888) 4PTGLAB (1-888-478-4522) (toll free in USA), or 1(312) 455-8498 (outside USA)

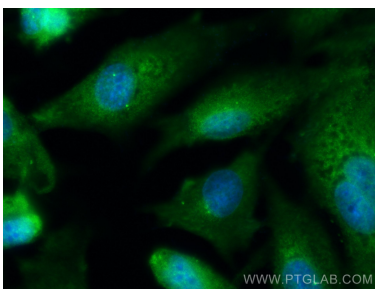
E: proteintech@ptglab.com
W: ptglab.com

This product is exclusively available under Proteintech Group brand and is not available to purchase from any other manufacturer.

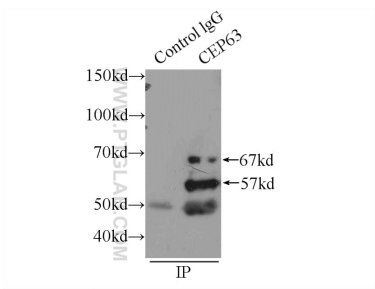
Selected Validation Data



HEK-293 cells were subjected to SDS PAGE followed by western blot with 16268-1-AP (CEP63 antibody) at dilution of 1:1000 incubated at room temperature for 1.5 hours.



Immunofluorescent analysis of (-20°C Methanol) fixed MDCK cells using CEP63 antibody (16268-1-AP) at dilution of 1:400 and CoraLite®488-Conjugated Goat Anti-Rabbit IgG(H+L).



IP result of anti-CEP63 (IP:16268-1-AP, 3ug; Detection:16268-1-AP 1:500) with HEK-293 cells lysate 1700ug.