

For Research Use Only

PPM1J Polyclonal antibody

Catalog Number: 16269-1-AP



Basic Information

Catalog Number: 16269-1-AP	GenBank Accession Number: BC011803	Purification Method: Antigen affinity purification
Size: 150ul , Concentration: 500 ug/ml by Nanodrop;	GeneID (NCBI): 333926	Recommended Dilutions: WB 1:500-1:1000
Source: Rabbit	UNIPROT ID: Q5JR12	
Isotype: IgG	Full Name: protein phosphatase 1J (PP2C domain containing)	
Immunogen Catalog Number: AG9336	Calculated MW: 505 aa, 54 kDa	
	Observed MW: 50 kDa	

Applications

Tested Applications: WB, ELISA	Positive Controls:
Species Specificity: human, mouse, rat	WB : mouse brain tissue, mouse skeletal muscle tissue, rat brain tissue, rat skeletal muscle tissue

Background Information

PPM1J also known as PPP2CZ, PP2C-zeta, belongs to the PP2C family. It has a unique N-terminal region and a proline-rich domain between conserved motifs II and III.

Storage

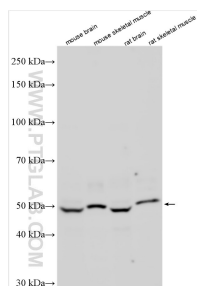
Storage:
Store at -20°C. Stable for one year after shipment.
Storage Buffer:
PBS with 0.02% sodium azide and 50% glycerol pH 7.3.
Aliquoting is unnecessary for -20°C storage

*** 20ul sizes contain 0.1% BSA

For technical support and original validation data for this product please contact:
T: 1 (888) 4PTGLAB (1-888-478-4522) (toll free in USA), or 1(312) 455-8498 (outside USA)
E: proteintech@ptglab.com
W: ptglab.com

This product is exclusively available under Proteintech Group brand and is not available to purchase from any other manufacturer.

Selected Validation Data



Various lysates were subjected to SDS PAGE followed by western blot with 16269-1-AP (PPM1J antibody) at dilution of 1:800 incubated at room temperature for 1.5 hours.