

For Research Use Only

PPCDC Polyclonal antibody

Catalog Number: 16270-1-AP



Basic Information

Catalog Number:

16270-1-AP

Size:

150ul, Concentration: 800 ug/ml by Nanodrop and 473 ug/ml by Bradford method using BSA as the standard;

Source:

Rabbit

Isotype:

IgG

Immunogen Catalog Number:

AG9337

GenBank Accession Number:

BC014409

GeneID (NCBI):

60490

UNIPROT ID:

Q96CD2

Full Name:

phosphopantothenoylcysteine decarboxylase

Calculated MW:

204 aa, 22 kDa

Observed MW:

22-25 kDa, 14 kDa

Purification Method:

Antigen affinity purification

Recommended Dilutions:

WB 1:1000-1:4000

Applications

Tested Applications:

WB, ELISA

Species Specificity:

human

Positive Controls:

WB : HEK-293 cells, human placenta tissue, HL-60 cells, K-562 cells

Background Information

Biosynthesis of coenzyme A (CoA) from pantothenic acid (vitamin B5) is an essential universal pathway in prokaryotes and eukaryotes. PPCDC, one of the last enzymes in this pathway, converts phosphopantothenoylcysteine to 4-prime-phosphopantetheine. The antibody was generated against full length human recombinant PPCDC, which is a bright yellow protein, indicating the presence of flavins. The antibody solution gives yellow color, too. It may be caused by elution of flavins during affinity purification with PPCDC-protein column.

Storage

Storage:

Store at -20°C. Stable for one year after shipment.

Storage Buffer:

PBS with 0.02% sodium azide and 50% glycerol pH 7.3.

Aliquoting is unnecessary for -20°C storage

*** 20ul sizes contain 0.1% BSA

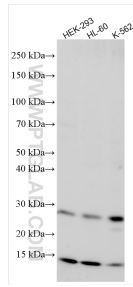
For technical support and original validation data for this product please contact:

T: 1 (888) 4PTGLAB (1-888-478-4522) (toll free in USA), or 1(312) 455-8498 (outside USA)

E: proteintech@ptglab.com
W: ptglab.com

This product is exclusively available under Proteintech Group brand and is not available to purchase from any other manufacturer.

Selected Validation Data



Various lysates were subjected to SDS PAGE followed by western blot with 16270-1-AP (PPCDC antibody) at dilution of 1:2000 incubated at room temperature for 1.5 hours.