

For Research Use Only

SYAP1 Polyclonal antibody

Catalog Number: 16272-1-AP

Featured Product

3 Publications



Basic Information

Catalog Number:

16272-1-AP

Size:

150ul, Concentration: 300 ug/ml by Nanodrop and 193 ug/ml by Bradford method using BSA as the standard;

Source:

Rabbit

Isotype:

IgG

Immunogen Catalog Number:

AG9342

GenBank Accession Number:

BC014657

GeneID (NCBI):

94056

UNIPROT ID:

Q96A49

Full Name:

synapse associated protein 1, SAP47 homolog (Drosophila)

Calculated MW:

352 aa, 40 kDa

Observed MW:

50-55 kDa

Purification Method:

Antigen affinity purification

Recommended Dilutions:

WB 1:1000-1:6000

IHC 1:50-1:500

IF/ICC 1:20-1:200

Applications

Tested Applications:

WB, IHC, IF/ICC, ELISA

Cited Applications:

WB, IF

Species Specificity:

human, mouse, rat

Cited Species:

mouse

Positive Controls:

WB : HEK-293 cells, SMMC-7721 cells, A431 cells, mouse lung tissue, HepG2 cells, L02 cells, mouse liver tissue, rat lung tissue

IHC : human cervical cancer tissue, human small intestine tissue

IF/ICC : HepG2 cells, A431 cells

Note-IHC: suggested antigen retrieval with TE buffer pH 9.0; (*) Alternatively, antigen retrieval may be performed with citrate buffer pH 6.0

Background Information

SYAP1(Synapse-associated protein 1) is a human homologue of the Drosophila SAP47 (synapse associated protein), which is recognized by a monoclonal antibody that selectively stain synaptic terminals. This protein is a 352 amino acid protein that is ubiquitously expressed in adult tissues. SYAP1 contains one BSD domain which is an approximately 60 amino acid long protein domain named after the BTF2-like transcription factors, Synapse-associated proteins and DOS2-like proteins in which it is found.

Notable Publications

Author	Pubmed ID	Journal	Application
Dominique Schmitt	27344443	Histochem Cell Biol	WB, IF
Cora R von Collenberg	31118165	Biol Open	IF
Xinxin Zuo	33398173	Nat Struct Mol Biol	WB

Storage

Storage:

Store at -20°C. Stable for one year after shipment.

Storage Buffer:

PBS with 0.02% sodium azide and 50% glycerol pH 7.3.

Aliquoting is unnecessary for -20°C storage

*** 20ul sizes contain 0.1% BSA

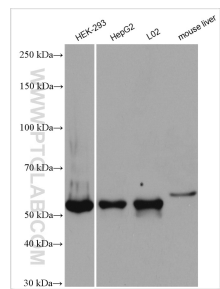
For technical support and original validation data for this product please contact:

T: 1 (888) 4PTGLAB (1-888-478-4522) (toll free in USA), or 1(312) 455-8498 (outside USA)

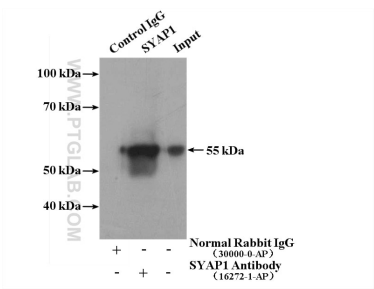
E: proteintech@ptglab.com
W: ptglab.com

This product is exclusively available under Proteintech Group brand and is not available to purchase from any other manufacturer.

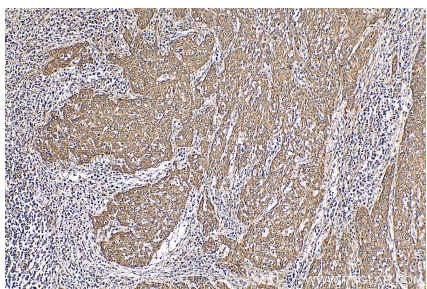
Selected Validation Data



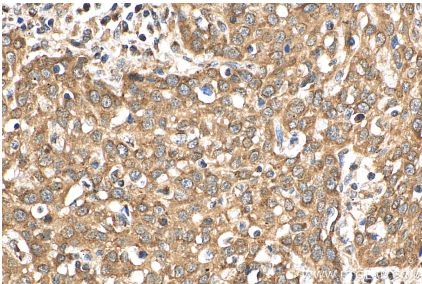
Various lysates were subjected to SDS PAGE followed by western blot with 16272-1-AP (SYAP1 antibody) at dilution of 1:3000 incubated at room temperature for 1.5 hours.



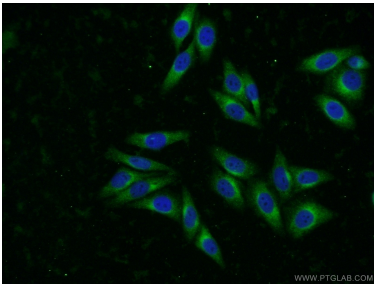
IP result of anti-SYAP1 (IP:16272-1-AP, 4ug; Detection:16272-1-AP 1:500) with L02 cells lysate 1800ug.



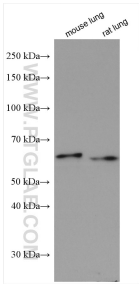
Immunohistochemical analysis of paraffin-embedded human cervical cancer tissue slide using 16272-1-AP (SYAP1 antibody) at dilution of 1:200 (under 10x lens). Heat mediated antigen retrieval with Tris-EDTA buffer (pH 9.0).



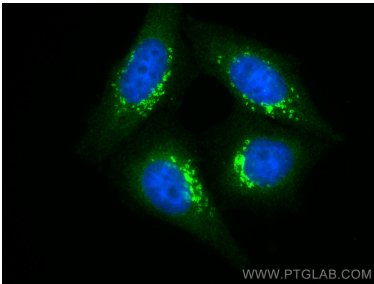
Immunohistochemical analysis of paraffin-embedded human cervical cancer tissue slide using 16272-1-AP (SYAP1 antibody) at dilution of 1:200 (under 40x lens). Heat mediated antigen retrieval with Tris-EDTA buffer (pH 9.0).



Immunofluorescent analysis of HepG2 cells using 16272-1-AP (SYAP1 antibody) at dilution of 1:50 and Alexa Fluor 488-conjugated Goat Anti-Rabbit IgG(H+L).



Various lysates were subjected to SDS PAGE followed by western blot with 16272-1-AP (SYAP1 antibody) at dilution of 1:2000 incubated at room temperature for 1.5 hours.



Immunofluorescent analysis of (4% PFA) fixed HepG2 cells using SYAP1 antibody (16272-1-AP) at dilution of 1:200 and CoraLite®488-Conjugated Goat Anti-Rabbit IgG(H+L).