

For Research Use Only

MRPS6 Polyclonal antibody

Catalog Number: 16273-1-AP



Basic Information

Catalog Number:

16273-1-AP

Size:

150ul , Concentration: 500 µg/ml by Nanodrop;

Source:

Rabbit

Isotype:

IgG

Immunogen Catalog Number:

AG9345

GenBank Accession Number:

BC010076

GeneID (NCBI):

64968

UNIPROT ID:

P82932

Full Name:

mitochondrial ribosomal protein S6

Calculated MW:

125 aa, 14 kDa

Observed MW:

14 kDa

Purification Method:

Antigen affinity purification

Recommended Dilutions:

WB 1:500-1:2000

IF 1:50-1:500

Applications

Tested Applications:

WB, IF, ELISA

Species Specificity:

human

Positive Controls:

WB : HEK-293 cells, HepG2 cells, Jurkat cells

IF : HepG2 cells,

Storage

Storage:

Store at -20°C. Stable for one year after shipment.

Storage Buffer:

PBS with 0.02% sodium azide and 50% glycerol pH 7.3.

Aliquoting is unnecessary for -20°C storage

***** 20ul sizes contain 0.1% BSA**

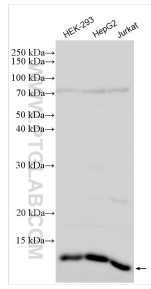
For technical support and original validation data for this product please contact:

T: 1 (888) 4PTGLAB (1-888-478-4522) (toll free in USA), or 1(312) 455-8498 (outside USA)

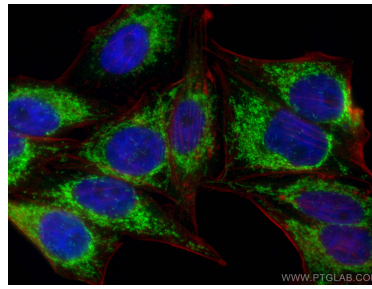
E: proteintech@ptglab.com
W: ptglab.com

This product is exclusively available under Proteintech Group brand and is not available to purchase from any other manufacturer.

Selected Validation Data



Various lysates were subjected to SDS PAGE followed by western blot with 16273-1-AP (MRPS6 antibody) at dilution of 1:1000 incubated at room temperature for 1.5 hours.



Immunofluorescent analysis of (4% PFA) fixed HepG2 cells using MRP6 antibody (16273-1-AP) at dilution of 1:200 and CoraLite®488-Conjugated AffiniPure Goat Anti-Rabbit IgG(H+L) (SA00013-2), CL594-phalloidin (red).