

For Research Use Only

CEP70 Polyclonal antibody

Catalog Number: 16280-1-AP

3 Publications



Basic Information

Catalog Number:

16280-1-AP

Size:

150ul , Concentration: 450 ug/ml by Nanodrop and 253 ug/ml by Bradford method using BSA as the standard;

Source:

Rabbit

Isotype:

IgG

Immunogen Catalog Number:

AG9365

GenBank Accession Number:

BC016050

GeneID (NCBI):

80321

UNIPROT ID:

Q8NHQ1

Full Name:

centrosomal protein 70kDa

Calculated MW:

597 aa, 70 kDa

Observed MW:

25-28 kDa

Purification Method:

Antigen affinity purification

Recommended Dilutions:

WB 1:1000-1:4000

IF/ICC 1:50-1:500

Applications

Tested Applications:

WB, IF/ICC, ELISA

Cited Applications:

WB, IF, IP

Species Specificity:

human, mouse

Cited Species:

human, mouse

Positive Controls:

WB : human placenta tissue, mouse testis tissue, PC-3 cells

IF/ICC : HeLa cells,

Background Information

CEP70, also named as Centrosomal protein of 70 kDa, is a 597 amino acid protein, which directly interacts with tubulin-gamma; this interaction determines centrosomal localization. CEP70 plays a role in the organization of both preexisting and nascent microtubules in interphase cells. During mitosis, CEP70 is required for the organization and orientation of the mitotic spindle. CEP70 exists some isoforms with MW 70, 67, 65 and 25 kDa.

Notable Publications

Author	Pubmed ID	Journal	Application
Sara Manore	39768178	Cells	WB
Xiaqing Zhang	38590928	Cell Insight	WB,IP
Tiechao Ruan	36967801	Front Endocrinol (Lausanne)	IF

Storage

Storage:

Store at -20°C. Stable for one year after shipment.

Storage Buffer:

PBS with 0.02% sodium azide and 50% glycerol pH 7.3.

Aliquoting is unnecessary for -20°C storage

*** 20ul sizes contain 0.1% BSA

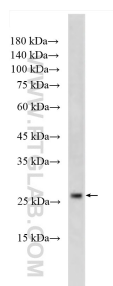
For technical support and original validation data for this product please contact:

T: 1 (888) 4PTGLAB (1-888-478-4522) (toll free in USA), or 1(312) 455-8498 (outside USA)

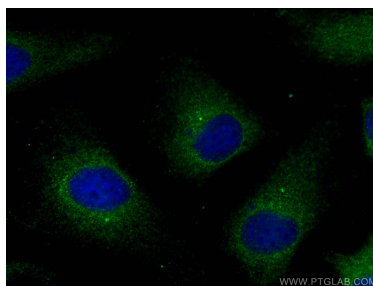
E: proteintech@ptglab.com
W: ptglab.com

This product is exclusively available under Proteintech Group brand and is not available to purchase from any other manufacturer.

Selected Validation Data



human placenta tissue were subjected to SDS PAGE followed by western blot with 16280-1-AP (CEP70 antibody) at dilution of 1:2000 incubated at room temperature for 1.5 hours.



Immunofluorescent analysis of (-20°C Methanol) fixed HeLa cells using CEP70 antibody (16280-1-AP) at dilution of 1:200 and CoraLite®488-Conjugated Goat Anti-Rabbit IgG(H+L).