

For Research Use Only

HN1L Polyclonal antibody

Catalog Number: 16285-1-AP



Basic Information

Catalog Number: 16285-1-AP	GenBank Accession Number: BC014438	Purification Method: Antigen affinity purification
Size: 150ul , Concentration: 150 µg/ml by Nanodrop and 227 µg/ml by Bradford method using BSA as the standard;	GeneID (NCBI): 90861	Recommended Dilutions: WB 1:500-1:2000
Source: Rabbit	Full Name: hematological and neurological expressed 1-like	
Isotype: IgG	Calculated MW: 190 aa, 20 kDa	
Immunogen Catalog Number: AG9400	Observed MW: 20 kDa	

Applications

Tested Applications: WB, ELISA	Positive Controls: WB : HEK-293 cells, HeLa cells, Jurkat cells
Species Specificity: human	

Background Information

Hematological and neurological expressed 1-like protein (HN1L), also known as Jupiter microtubule-associated homolog 2 (JPT2), belongs to the jupiter family. HN1L is nicotinic acid adenine dinucleotide phosphate (NAADP) binding protein required for NAADP-evoked intracellular calcium release (PubMed:33758061). HN1L enables NAADP to activate Ca²⁺ release from the endoplasmic reticulum through ryanodine receptors (PubMed:33758062). HN1L was also required for the translocation of a severe acute respiratory syndrome coronavirus 2 (SARS-CoV-2) pseudovirus through the endolysosomal system HN1L is expressed in liver, kidney, prostate, testis and uterus (PMID: 15094197).

Storage

Storage:
Store at -20°C. Stable for one year after shipment.
Storage Buffer:
PBS with 0.02% sodium azide and 50% glycerol pH 7.3.
Aliquoting is unnecessary for -20°C storage

*** 20ul sizes contain 0.1% BSA

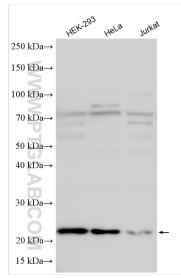
For technical support and original validation data for this product please contact:

T: 1 (888) 4PTGLAB (1-888-478-4522) (toll free in USA), or 1(312) 455-8498 (outside USA)

E: proteintech@ptglab.com
W: ptglab.com

This product is exclusively available under Proteintech Group brand and is not available to purchase from any other manufacturer.

Selected Validation Data



Various lysates were subjected to SDS PAGE followed by western blot with 16285-1-AP (HN1L antibody) at dilution of 1:1000 incubated at room temperature for 1.5 hours.