

For Research Use Only

HN1L Polyclonal antibody, PBS Only

Catalog Number:16285-1-PBS



Basic Information

Catalog Number: 16285-1-PBS	GenBank Accession Number: BC014438	Purification Method: Antigen affinity purification
Size: 100ug , Concentration: 1 mg/ml by Nanodrop;	GeneID (NCBI): 90861	
Source: Rabbit	UNIPROT ID: Q9H910	
Isotype: IgG	Full Name: hematological and neurological expressed 1-like	
Immunogen Catalog Number: AG9400	Calculated MW: 190 aa, 20 kDa	
	Observed MW: 20-25 kDa	

Applications

Tested Applications:
WB, IHC, IF/ICC, Indirect ELISA

Species Specificity:
human

Background Information

Hematological and neurological expressed 1-like protein (HN1L), also known as Jupiter microtubule-associated homolog 2 (JPT2), belongs to the jupiter family. HN1L is nicotinic acid adenine dinucleotide phosphate (NAADP) binding protein required for NAADP-evoked intracellular calcium release (PubMed:33758061). HN1L enables NAADP to activate Ca²⁺ release from the endoplasmic reticulum through ryanodine receptors (PubMed:33758062). HN1L was also required for the translocation of a severe acute respiratory syndrome coronavirus 2 (SARS-CoV-2) pseudovirus through the endolysosomal system HN1L is expressed in liver, kidney, prostate, testis and uterus (PMID: 15094197).

Storage

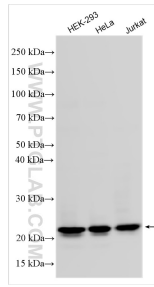
Storage:
Store at -80°C.

Storage Buffer:
PBS only, pH7.3

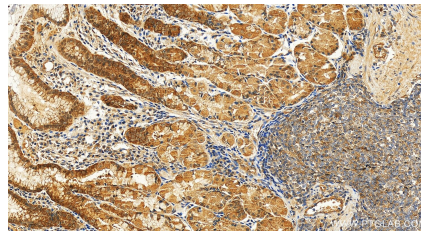
For technical support and original validation data for this product please contact:
T: 1 (888) 4PTGLAB (1-888-478-4522) (toll free in USA), or 1(312) 455-8498 (outside USA) E: proteintech@ptglab.com
W: ptglab.com

This product is exclusively available under Proteintech Group brand and is not available to purchase from any other manufacturer.

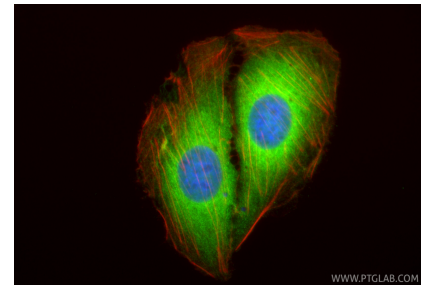
Selected Validation Data



Various lysates were subjected to SDS PAGE followed by western blot with 16285-1-AP (HN1L antibody) at dilution of 1:15000 incubated at room temperature for 1.5 hours. This data was developed using the same antibody clone with 16285-1-PBS in a different storage buffer formulation.



Immunohistochemical analysis of paraffin-embedded human stomach tissue slide using 16285-1-AP (HN1L antibody) at dilution of 1:600 (under 20x lens). Heat mediated antigen retrieval with Tris-EDTA buffer (pH 9.0). This data was developed using the same antibody clone with 16285-1-PBS in a different storage buffer formulation.



Immunofluorescent analysis of (4% PFA) fixed U2OS cells using HN1L antibody (16285-1-AP) at dilution of 1:400 and CoraLite@488-Conjugated Goat Anti-Rabbit IgG(H+L) (SA00013-2), CL594-Phalloidin (red). This data was developed using the same antibody clone with 16285-1-PBS in a different storage buffer formulation.