

For Research Use Only

MYL12A Polyclonal antibody

Catalog Number: 16287-1-AP

4 Publications



Basic Information

Catalog Number:

16287-1-AP

Size:

150ul, Concentration: 350 ug/ml by Nanodrop and 227 ug/ml by Bradford method using BSA as the standard;

Source:

Rabbit

Isotype:

IgG

Immunogen Catalog Number:

AG9413

GenBank Accession Number:

BC016372

GeneID (NCBI):

10627

UNIPROT ID:

P19105

Full Name:

myosin, light chain 12A, regulatory, non-sarcomeric

Calculated MW:

171 aa, 20 kDa

Observed MW:

19-20 kDa

Purification Method:

Antigen affinity purification

Recommended Dilutions:

WB 1:500-1:1000

IHC 1:20-1:200

Applications

Tested Applications:

WB, IHC, ELISA

Cited Applications:

WB, IHC

Species Specificity:

human, mouse, rat

Cited Species:

human, mouse, pig

Note-IHC: suggested antigen retrieval with TE buffer pH 9.0; (*) Alternatively, antigen retrieval may be performed with citrate buffer pH 6.0

Positive Controls:

WB: NIH/3T3 cells, human skeletal muscle tissue, mouse bladder tissue, Jurkat cells, HEK-293 cells, HeLa cells, mouse heart tissue

IHC: human heart tissue, human skeletal muscle tissue

Notable Publications

Author	Pubmed ID	Journal	Application
Marchenko A V AV	21268344	Biofizika	IHC
Jie Sun	33424621	Front Physiol	WB
Yuanji Dai	38528181	EMBO J	WB

Storage

Storage:

Store at -20°C. Stable for one year after shipment.

Storage Buffer:

PBS with 0.02% sodium azide and 50% glycerol pH 7.3.

Aliquoting is unnecessary for -20°C storage

*** 20ul sizes contain 0.1% BSA

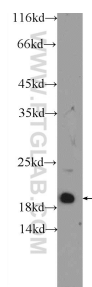
For technical support and original validation data for this product please contact:

T: 1 (888) 4PTGLAB (1-888-478-4522) (toll free in USA), or 1(312) 455-8498 (outside USA)

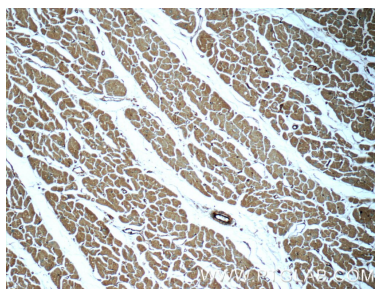
E: proteintech@ptglab.com
W: ptglab.com

This product is exclusively available under Proteintech Group brand and is not available to purchase from any other manufacturer.

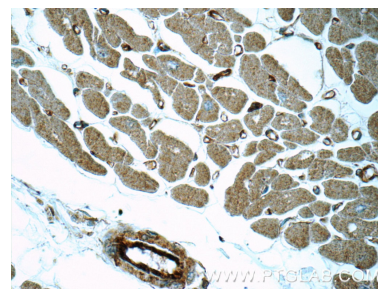
Selected Validation Data



NIH/3T3 cells were subjected to SDS PAGE followed by western blot with 16287-1-AP (MYL12A Antibody) at dilution of 1:600 incubated at room temperature for 1.5 hours.



Immunohistochemical analysis of paraffin-embedded human heart tissue slide using 16287-1-AP (MYL12A Antibody) at dilution of 1:50 (under 10x lens).



Immunohistochemical analysis of paraffin-embedded human heart tissue slide using 16287-1-AP (MYL12A Antibody) at dilution of 1:50 (under 40x lens).