

For Research Use Only

MRPS31 Polyclonal antibody

Catalog Number: 16288-1-AP

Featured Product

1 Publications



Basic Information

Catalog Number:

16288-1-AP

Size:

150ul, Concentration: 400 µg/ml by Nanodrop and 307 µg/ml by Bradford method using BSA as the standard;

Source:

Rabbit

Isotype:

IgG

Immunogen Catalog Number:

AG9434

GenBank Accession Number:

BC022045

GeneID (NCBI):

10240

UNIPROT ID:

Q92665

Full Name:

mitochondrial ribosomal protein S31

Calculated MW:

395 aa, 45 kDa

Observed MW:

38 kDa

Purification Method:

Antigen affinity purification

Recommended Dilutions:

WB 1:1000-1:6000

IF 1:200-1:800

Applications

Tested Applications:

IF, WB, ELISA

Cited Applications:

WB

Species Specificity:

human, mouse, rat

Cited Species:

human

Positive Controls:

WB : HeLa cells, Jurkat cells, HepG2 cells, MCF-7 cells

IF : HeLa cells,

Notable Publications

Author	Pubmed ID	Journal	Application
Juliette Pulman	30566640	Hum Mol Genet	WB

Storage

Storage:

Store at -20°C. Stable for one year after shipment.

Storage Buffer:

PBS with 0.02% sodium azide and 50% glycerol pH 7.3.

Aliquoting is unnecessary for -20°C storage

*** 20ul sizes contain 0.1% BSA

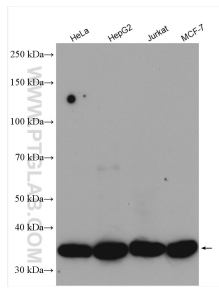
For technical support and original validation data for this product please contact:

T: 1 (888) 4PTGLAB (1-888-478-4522) (toll free in USA), or 1(312) 455-8498 (outside USA)

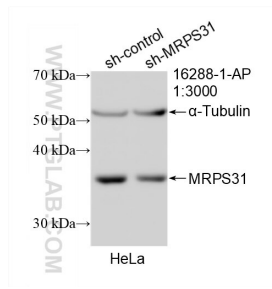
E: proteintech@ptglab.com
W: ptglab.com

This product is exclusively available under Proteintech Group brand and is not available to purchase from any other manufacturer.

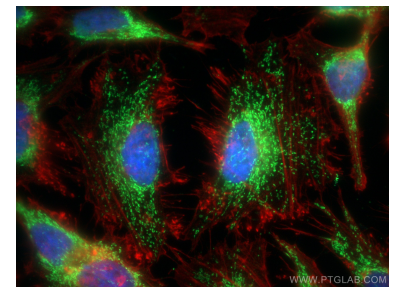
Selected Validation Data



Various lysates were subjected to SDS PAGE followed by western blot with 16288-1-AP (MRPS31 antibody) at dilution of 1:3000 incubated at room temperature for 1.5 hours.



WB result of MRPS31 antibody (16288-1-AP; 1:400; incubated at room temperature for 1.5 hours) with sh-Control and sh-MRPS31 transfected HeLa cells.



Immunofluorescent analysis of (4% PFA) fixed HeLa cells using MRPS31 antibody (16288-1-AP) at dilution of 1:400 and CoraLite®488-Conjugated AffiniPure Goat Anti-Rabbit IgG(H+L), CL594-Phalloidin (red).