

For Research Use Only

# CDC37L1 Polyclonal antibody

Catalog Number: 16293-1-AP

Featured Product

2 Publications



## Basic Information

### Catalog Number:

16293-1-AP

### Size:

150ul, Concentration: 750 ug/ml by Nanodrop and 333 ug/ml by Bradford method using BSA as the standard;

### Source:

Rabbit

### Isotype:

IgG

### Immunogen Catalog Number:

AG9459

### GenBank Accession Number:

BC014133

### GeneID (NCBI):

55664

### UNIPROT ID:

Q7L3B6

### Full Name:

cell division cycle 37 homolog (S. cerevisiae)-like 1

### Calculated MW:

337 aa, 39 kDa

### Observed MW:

39 kDa

### Purification Method:

Antigen affinity purification

### Recommended Dilutions:

WB 1:1000-1:5000

IHC 1:50-1:500

## Applications

### Tested Applications:

WB, IHC, ELISA

### Cited Applications:

WB, IHC

### Species Specificity:

human

### Cited Species:

human

**Note-IHC: suggested antigen retrieval with TE buffer pH 9.0; (\*) Alternatively, antigen retrieval may be performed with citrate buffer pH 6.0**

### Positive Controls:

WB : HeLa cells, human kidney tissue, Jurkat cells, LNCaP cells, MCF-7 cells, U2OS cells

IHC : human kidney tissue, human liver tissue

## Notable Publications

Author	Pubmed ID	Journal	Application
Li Li	33976724	J Cancer	WB, IHC
Li Li	35760798	Cell Death Discov	WB, IHC

## Storage

### Storage:

Store at -20°C. Stable for one year after shipment.

### Storage Buffer:

PBS with 0.02% sodium azide and 50% glycerol pH 7.3.

Aliquoting is unnecessary for -20°C storage

\*\*\* 20ul sizes contain 0.1% BSA

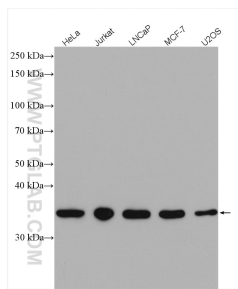
For technical support and original validation data for this product please contact:

T: 1 (888) 4PTGLAB (1-888-478-4522) (toll free in USA), or 1(312) 455-8498 (outside USA)

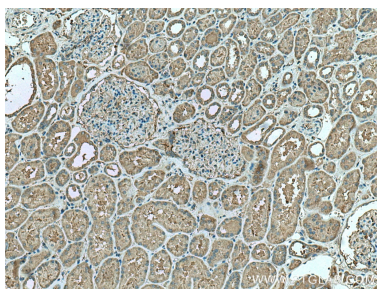
E: [proteintech@ptglab.com](mailto:proteintech@ptglab.com)  
W: [ptglab.com](http://ptglab.com)

This product is exclusively available under Proteintech Group brand and is not available to purchase from any other manufacturer.

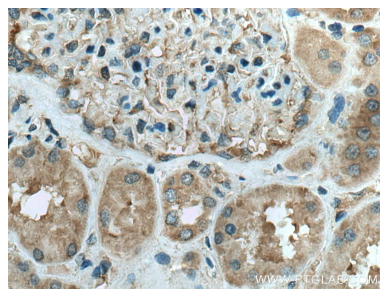
## Selected Validation Data



Various lysates were subjected to SDS PAGE followed by western blot with 16293-1-AP (CDC37L1 antibody) at dilution of 1:2500 incubated at room temperature for 1.5 hours.



Immunohistochemical analysis of paraffin-embedded human kidney tissue slide using 16293-1-AP (CDC37L1 antibody) at dilution of 1:200 (under 10x lens). Heat mediated antigen retrieval with Tris-EDTA buffer (pH 9.0).



Immunohistochemical analysis of paraffin-embedded human kidney tissue slide using 16293-1-AP (CDC37L1 antibody) at dilution of 1:200 (under 40x lens). Heat mediated antigen retrieval with Tris-EDTA buffer (pH 9.0).