

For Research Use Only

GHITM Polyclonal antibody

Catalog Number: 16296-1-AP

Featured Product

7 Publications



Basic Information

Catalog Number:

16296-1-AP

Size:

150ul, Concentration: 650 ug/ml by Nanodrop;

Source:

Rabbit

Isotype:

IgG

Immunogen Catalog Number:

AG9482

GenBank Accession Number:

BC010354

GeneID (NCBI):

27069

UNIPROT ID:

Q9H3K2

Full Name:

growth hormone inducible transmembrane protein

Calculated MW:

345 aa, 37 kDa

Observed MW:

42 kDa, 25-27 kDa

Purification Method:

Antigen affinity purification

Recommended Dilutions:

WB 1:200-1:1000

IHC 1:50-1:500

IF/ICC 1:200-1:800

Applications

Tested Applications:

WB, IHC, IF/ICC, ELISA

Cited Applications:

WB

Species Specificity:

human, mouse

Cited Species:

human, mouse

Positive Controls:

WB: mouse liver tissue, HEK-293 cells, HeLa cells, SH-SY5Y cells

IHC: mouse brain tissue,

IF/ICC: HeLa cells,

Note-IHC: suggested antigen retrieval with TE buffer pH 9.0; (*) Alternatively, antigen retrieval may be performed with citrate buffer pH 6.0

Background Information

GHITM, also known as MICS1, TMIM5 or DERP2, is a mitochondrial protein which localizes in the inner membrane. GHITM is involved in mitochondrial morphology in specific cristae structures and the apoptotic release of cytochrome c from the mitochondria (PMID: 18417609). The gene of GHITM maps to chromosome 10q23.1, and encodes a 345-amino-acid protein with a calculated molecular mass of 37 kDa. The apparent molecular weight has been reported to be 42 kDa, the increased size in the protein may be due to post-translational modifications (PMID: 11416014; 16412389). GHITM can be cleaved into smaller forms of 23-27 kDa (PMID: 16412389; 18417609).

Notable Publications

Author	Pubmed ID	Journal	Application
Bruno Seitaj	32977469	Cells	WB
Li Zhang	35715207	Life Sci Alliance	WB
Maria Patron	35912435	EMBO J	WB

Storage

Storage:

Store at -20°C. Stable for one year after shipment.

Storage Buffer:

PBS with 0.02% sodium azide and 50% glycerol pH 7.3.

Aliquoting is unnecessary for -20°C storage

*** 20ul sizes contain 0.1% BSA

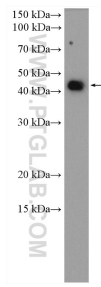
For technical support and original validation data for this product please contact:

T: 1 (888) 4PTGLAB (1-888-478-4522) (toll free in USA), or 1(312) 455-8498 (outside USA)

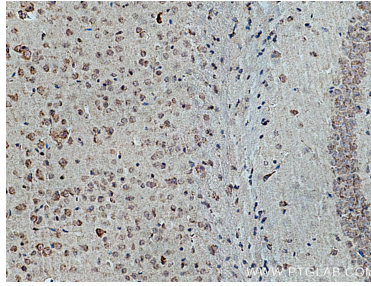
E: proteintech@ptglab.com
W: ptglab.com

This product is exclusively available under Proteintech Group brand and is not available to purchase from any other manufacturer.

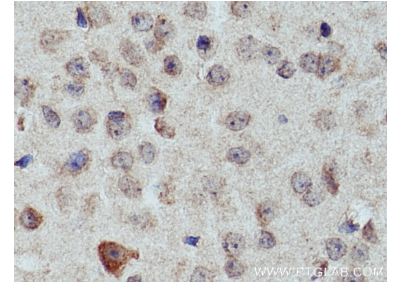
Selected Validation Data



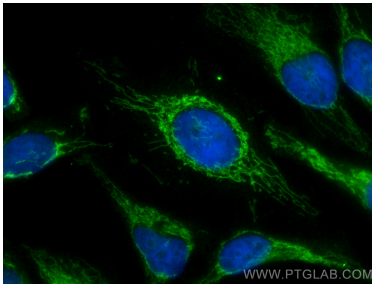
mouse liver mitochondria tissue were subjected to SDS PAGE followed by western blot with 16296-1-AP (GHITM antibody) at dilution of 1:300 incubated at room temperature for 1.5 hours.



Immunohistochemical analysis of paraffin-embedded mouse brain tissue slide using 16296-1-AP (GHITM antibody) at dilution of 1:200 (under 10x lens). Heat mediated antigen retrieval with Tris-EDTA buffer (pH 9.0).



Immunohistochemical analysis of paraffin-embedded mouse brain tissue slide using 16296-1-AP (GHITM antibody) at dilution of 1:200 (under 40x lens). Heat mediated antigen retrieval with Tris-EDTA buffer (pH 9.0).



Immunofluorescent analysis of (4% PFA) fixed HeLa cells using GHITM antibody (16296-1-AP) at dilution of 1:400 and CoraLite® 488-Conjugated AffiniPure Goat Anti-Rabbit IgG(H+L) (SA00013-2).