

For Research Use Only

GHITM Polyclonal antibody, PBS Only

Catalog Number: 16296-1-PBS

Featured Product



Basic Information

Catalog Number:

16296-1-PBS

Size:

100ug, Concentration: 1 mg/ml by Nanodrop;

Source:

Rabbit

Isotype:

IgG

Immunogen Catalog Number:

AG9482

GenBank Accession Number:

BC010354

GeneID (NCBI):

27069

UNIPROT ID:

Q9H3K2

Full Name:

growth hormone inducible transmembrane protein

Calculated MW:

345 aa, 37 kDa

Observed MW:

42 kDa, 25-27 kDa

Purification Method:

Antigen affinity purification

Applications

Tested Applications:

WB, IHC, IF/ICC, Indirect ELISA

Species Specificity:

human, mouse

Background Information

GHITM, also known as MICS1, TMBIM5 or DERP2, is a mitochondrial protein which localizes in the inner membrane. GHITM is involved in mitochondrial morphology in specific cristae structures and the apoptotic release of cytochrome c from the mitochondria (PMID: 18417609). The gene of GHITM maps to chromosome 10q23.1, and encodes a 345-amino-acid protein with a calculated molecular mass of 37 kDa. The apparent molecular weight has been reported to be 42 kDa, the increased size in the protein may be due to post-translational modifications (PMID: 11416014; 16412389). GHITM can be cleaved into smaller forms of 23-27 kDa (PMID: 16412389; 18417609).

Storage

Storage:

Store at -80°C.

Storage Buffer:

PBS only, pH7.3

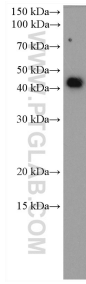
For technical support and original validation data for this product please contact:

T: 1 (888) 4PTGLAB (1-888-478-4522) (toll free in USA), or 1(312) 455-8498 (outside USA)

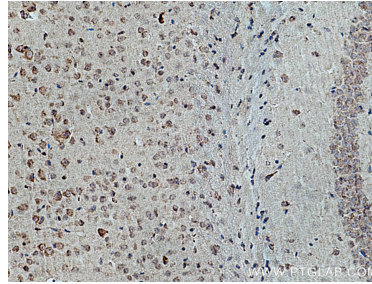
E: proteintech@ptglab.com
W: ptglab.com

This product is exclusively available under Proteintech Group brand and is not available to purchase from any other manufacturer.

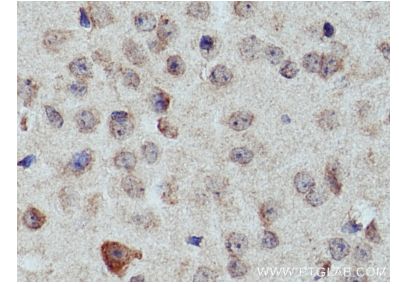
Selected Validation Data



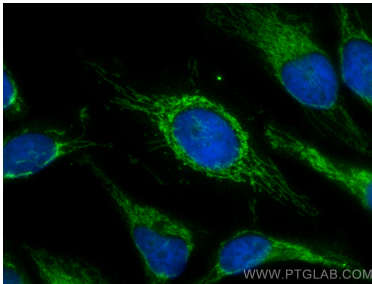
mouse liver mitochondria tissue were subjected to SDS PAGE followed by western blot with 16296-1-AP (GHITM antibody) at dilution of 1:300 incubated at room temperature for 1.5 hours. This data was developed using the same antibody clone with 16296-1-PBS in a different storage buffer formulation.



Immunohistochemical analysis of paraffin-embedded mouse brain tissue slide using 16296-1-AP (GHITM antibody) at dilution of 1:200 (under 10x lens). Heat mediated antigen retrieval with Tris-EDTA buffer (pH 9.0). This data was developed using the same antibody clone with 16296-1-PBS in a different storage buffer formulation.



Immunohistochemical analysis of paraffin-embedded mouse brain tissue slide using 16296-1-AP (GHITM antibody) at dilution of 1:200 (under 40x lens). Heat mediated antigen retrieval with Tris-EDTA buffer (pH 9.0). This data was developed using the same antibody clone with 16296-1-PBS in a different storage buffer formulation.



Immunofluorescent analysis of (4% PFA) fixed HeLa cells using GHITM antibody (16296-1-AP) at dilution of 1:400 and CoralLite®488-Conjugated AffiniPure Goat Anti-Rabbit IgG(H+L) (SA00013-2). This data was developed using the same antibody clone with 16296-1-PBS in a different storage buffer formulation.